



PRSRT STD
U.S. POSTAGE
PAID
Burlington, WI
#100

*ecrwss
POSTAL CUSTOMER

NEIGHBORS

A Publication of the East Troy Area Chamber of Commerce

WWW.EASTTROYWI.ORG

JANUARY 2009

VOLUME 20, EDITION 1

What's New For 2009?

The beginning of a new year provides an opportunity to start anew. The East Troy Area Chamber of Commerce and its member businesses have a full slate of new programs and activities in store for 2009.

By Katie Matteson
CHAMBER
EXECUTIVE
DIRECTOR

Oven Corporation (Chairman), Allan Integrated Control Systems, Inc. (Leader), First Citizens State Bank-East Troy Office (Leader), Alpine Valley Music Theatre (Leader) and ProHealth Care (Leader), the first Chamber members to come forward as Corporate Partners for 2009.

Healthy Communities Cooperative

The Chamber is on the forefront of an innovative co-op based group health insurance initiative that seeks to bring high quality, affordable health care to participating Chamber of Commerce members in Walworth, Rock, Jefferson, Green, Dodge and Dane counties. The co-op board is expected to announce its carrier selection this month, with the kick-off date for coverage expected to begin July 1. Watch for information about co-op membership and insurance applications in the coming weeks.

Starting with a health risk assessment, those insured by the plan will play an

active role in keeping their health insurance rates under control by participating in the wellness program. The goal is to identify chronic issues and help people make informed choices to improve their health. The program will provide coordination of existing community programs, resources and activities, along with education on proper diet and exercise, to promote healthy lifestyles and reduce future claims.

25th Anniversary

Michael Fields Agricultural Institute, W2493 County ES, will celebrate its 25th anniversary in the fall. Beginning in February, Michael Fields will present its 2009 Whole Farm Workshop Series.

The workshop series is divided into four groups. "The Land" is the foundation of farm sustainability. These courses develop a deeper understanding of farm sustainability. "The Farm" offers production-based workshops in market crops and animal production. "The Tools"

are workshops that range from entry-level equipment usage to finding added value on the farm that result in practical skills that will accelerate business development and lead to more profitable practices. "The Community" represents the relationship that consumers need in today's society to feel more closely connected to the farms that produce the food they eat. Traditional farm life skills are taught in Michael Fields Kitchen with farm fresh products.

For more information, including a complete workshop series catalog and registration, visit michaelfieldsagainst.org.

National Model Search

Local photographer, Kimberly Ann of Kimberly Ann Photography, is proud to be a participating photographer in the National Charity Model Search to select "America's Cutest Kid" and help raise funds for charity. She's looking for children ages 18

See *WHAT'S NEW*, Page 3

2009 Corporate Partners:



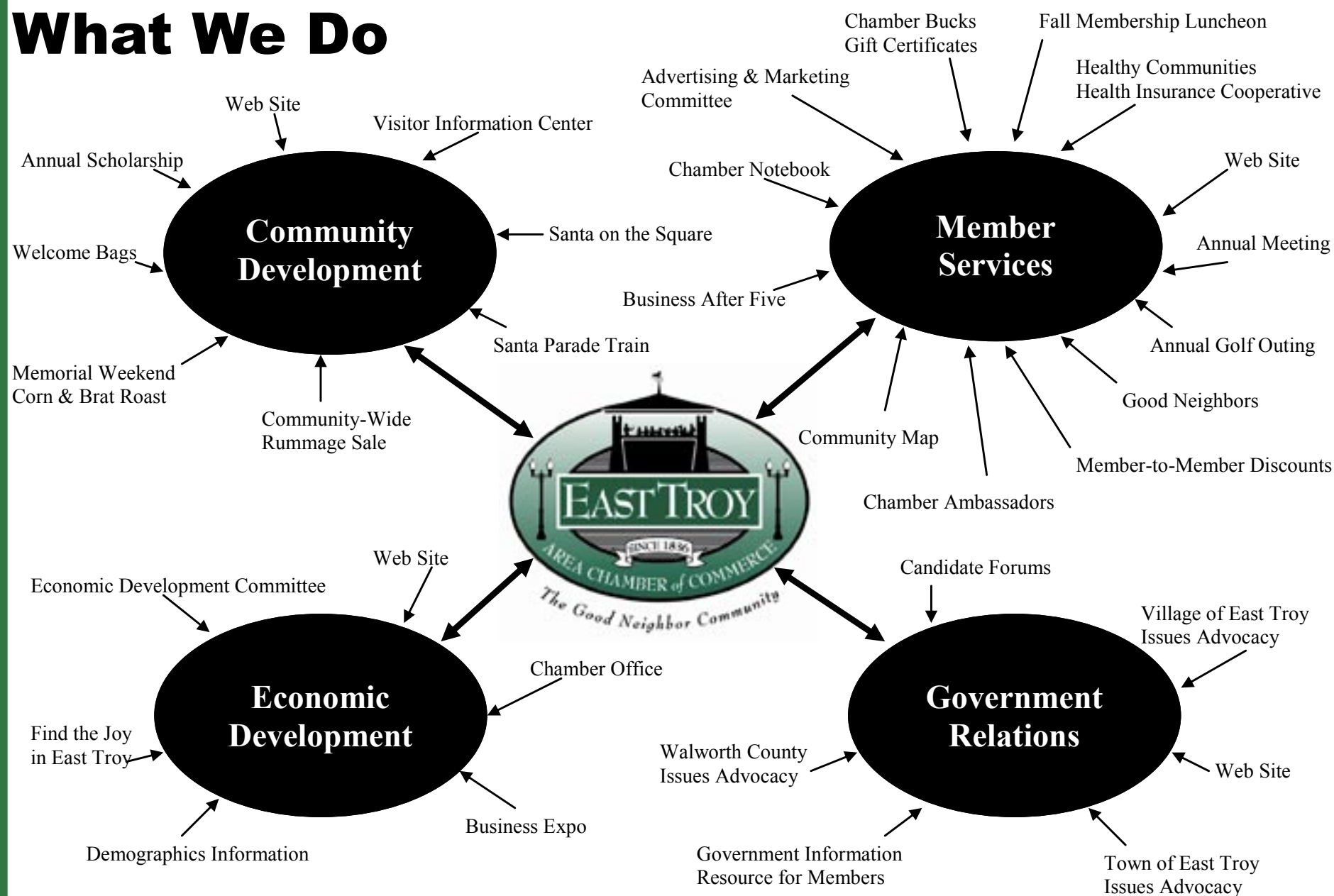
PROHEALTH CARE



WISCONSIN OVEN CORPORATION



What We Do



President's Notebook

By Lori Szolwinski, President
CHAMBER PRESIDENT, FIRST CITIZENS STATE BANK-EAST TROY OFFICE



The new year is here and your Chamber of Commerce is raring to go with its goals in place for 2009.

1) Launch and grow the newly designed Chamber Web site. The Chamber's existing Web site was designed in 2003 and in need of updating. We've been working with local talent at Volece Tech to give the site a new look, as well as adding information and photos to properly showcase our great community. Plans call for presenting the new site at the Chamber's Annual Meeting on Feb. 11.

2) Fully utilize the new ChamberMaster software by integrating it into office operations and provide training to members. ChamberMaster is member management software specifically designed for Chambers of Commerce. It includes the backend database for member records and Web site, eliminating the need for multiple databases and spreadsheets to manage the Chamber. Web site components include:

- Online Business Directory module with informational Web page for each member. Google mapping pinpoints member locations for consumers in Business Directory search results.
- Calendar of Events component that allows the management of the invitation and registration process, track member participation and automatically send e-mail reminders.
- Information Request (Visitor Center) module routes leads back to business members and tracks advertising effectiveness.
- Manage Hot Deals, eCoupons and web advertising campaigns with the Advertising module.
- The Job Posting section lets members post jobs on the Web site.

3) Implement the new Corporate Partners program. Corporate partnerships will provide an opportunity of member businesses to expand their support of Chamber programs beyond their annual dues to help strengthen the voice of business in the community. The health of the East Troy business community

requires that the Chamber expand its role in the areas of Economic Development and Government Relations, as well as investing in technology to improve the Chamber's Web site. Levels of support include Chairman (\$3,500), Executive (\$2,500) and Leader (\$1,000). We're thrilled that five businesses have already stepped forward to participate, including Wisconsin Oven Corporation (Chairman), Allan Integrated Control Systems, Inc. (Leader), First Citizens State Bank-East Troy Office (Leader), Alpine Valley Music Theatre (Leader) and ProHealth Care (Leader).

4) Develop a yearlong marketing and advertising plan to promote Chamber activities and member businesses. The Chamber's Advertising and Marketing Committee is working to develop a plan that will maintain a consistent presence of the Chamber in the public's eye, as well as promote specific community events and member functions.

5) Expand Chamber activities in the areas of Economic Development and Government Relations. The Chamber already has representation on the Village of East Troy's Economic Development Committee and participates in programs offered by the Walworth County Economic Development Alliance, Inc. Plans call for partnering with WCEDA to offer local workshops, providing demographic information on the Web site and sponsoring Candidate Forums for local contested races. In addition, the Chamber's Ambassador Committee is currently organizing a Business Expo, which will be held Saturday, April 25 from 10 a.m. to 3 p.m. at East Troy Middle School.

It's a great time to be a member of the East Troy Area Chamber of Commerce. For membership information, contact Executive Director Katie Matteson at (262) 642-3770 or info@easttroywi.org.

New Member Profile

HOME HELPERS/ DIRECT LINK

P.O. Box 63
Burlington, WI 53105
Phone: (262) 757-0012
E-mail: aaronnelson@homehelpers.cc
Web site:
www.homehelperswisconsin.com



KATIE MATTESON *Good Neighbors*

Chamber Ambassador Pam Burki (right) from Realty Executives Integrity welcomed Aaron Nelson from Home Helpers/Direct Link as a new member of the East Troy Area Chamber of Commerce.

Home Helpers provides personal care in homes, retirement communities, nursing homes, hospitals, rehab centers and more. Aaron Nelson and his team are experienced, dependable caregivers who truly enjoy helping others. The caregivers are employees who are all bonded and covered by workers compensation insurance. They provide services for two to 24 hours of care.

The East Troy Area Chamber of Commerce's Ambassador Committee invites you to showcase your business or organization in the



2009 Business Expo

**Saturday,
April 25, 2009
10 a.m.—3 p.m.
East Troy
Middle School**

Free admission to the public, with booths located in the school's gym and main hallways, food court in the cafeteria and demonstrations in the auditorium.

Sign-up by March 1 to get in on this exciting promotional opportunity.

Your \$75 entry fee includes:

- 6 x 10 booth, with green/white walls, 6-foot skirted table with white cover and two charcoal chairs for exhibitors or booth space in the cafeteria for food vendors.
- Event advertising and press releases.
- Opportunity for demonstrations, displays, product give-aways, drawings and job opportunities.

- 60 Booths Available
- Food Court
- Demonstrations
- Kids Corner
- Raffles

East Troy Area Chamber of Commerce

2096 Church St., Suite A
P.O. Box 312
East Troy, WI 53120
Phone: 262-642-3770
Fax: 262-642-8769
E-mail: info@easttroywi.org
Web site: easttroywi.org



Good NEIGHBORS

A Publication of the East Troy Area Chamber of Commerce



EAST TROY AREA CHAMBER OF COMMERCE

Katie Matteson Executive Director
Patti Friedl Administrative Assistant

**2096 Church St., P.O. Box 312
East Troy, WI 53120
(262) 642-3770 - phone
(262) 642-8769 - fax
info@easttroywi.org**

EAST TROY NEWS

Jack Cruger Publisher

**3224 W. Main St., Suite B
P.O. Box 47, East Troy, WI 53120
(262) 642-7451 - phone
(262) 642-2409 - fax
etnews@easttroynews.com**

WHO TO CONTACT?

To advertise contact Jamie Farra
(262) 642-7451 or
jfarra@easttroynews.com

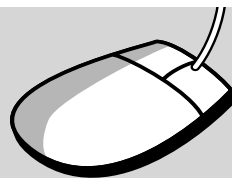
To submit news briefs about your company or organization contact Katie Matteson

To update your membership information contact Patti Friedl

To submit an event for the calendar of events contact Patti Friedl

To submit information for a new member profile contact Katie Matteson

Good Neighbors is a publication of the East Troy Area Chamber of Commerce coordinated by the East Troy News and published four times per year in April, May, September and November.



VISIT US ONLINE AT
www.easttroywi.org

2009 East Troy Area Chamber of Commerce Board of Directors

President
Lori Szolwinski, First Citizens State Bank, East Troy Office

Vice President
Pam Burki, Realty Executives Integrity

Secretary
De Anne Conrad, Citizens Bank of Mukwonago, East Brook Office

Treasurer
Ann Zess, Allan Integrated Control Systems, Inc
Board Members
Barb DeLap, DeLap's Hardware & Rental
Jean Schultz, Waukesha Memorial Hospital

David Allen, East Troy House Historic Inn & Tavern
Terry Larson, Teronomy Builders
Amber Anderson, Country Inn & Suites
Jon Bunne, Buell Motorcycle Company
Daniel Heidelmeier, Not Just Beans, LLC
James Maklary, Maklary Technology Consulting, Inc.



WHAT'S NEW, continued from front page

months to 14 years to model for a portrait to be entered into the contest. Prizes include a \$5,000 U.S. Savings bond and Canon G10 digital camera. Also, the child voted city finalist may elect to serve as a model during the 2009 Sandy Puc' Tots 2 Teens Seminar Tour in Madison.

For more information, or to enter your child(ren), contact Kimberly Billings at (262) 492-3893 or e-mail kimberlyannpho tography@yahoo.com. All model portrait sessions must take place between Jan. 1 and March 20, 2009 to be entered in the contest.

Classroom/Playroom Remodeling

Butterfly Life Family Child Care & Preschool, W2491 Swoboda Road, is in the process of remodeling its classroom/playroom for 2009 after completely gutting it. The preschool has some great new fun play centers that are eco-friendly and will inspire imagination. Director Jennifer Martinez continues to serve healthy snacks and meals that offer a variety of organic foods and use all natural cleaning products and non-toxic toys. The kids will continue to learn about the environment, recycling, composting and growing food, while having fun on the farm. The center has open enrollment for child care and preschool. For more information, visit www.vintagehobbyfarm.com.

New Gastroenterology Specialists

With increasing demand for gastroenterology services in Walworth County, Aurora Lakeland Medical Center in Elkhorn welcomes a new group of gastroenterology physician specialists to the hospital. The new team has provided comprehensive gastroenterology services at Aurora Memorial Hospital of Burlington for several years.

The board certified gastroenterology physicians include: Phillip Chung, M.D., medical degree from University of Chicago; Stephen Deutsch, M.D., medical degree from Tufts University, Boston; Bennett Pastika, D.O., medical degree from the Chicago College of Osteopathic Medicine; James Radke, M.D., medical degree from Loyola University in Chicago and Rama Venu, M.D., medical degree from Kerlaa University-Kottayam.

"Our goal is to provide services that people need close to home and work," said Kathy Skowlund, vice president and chief administrative officer at Lakeland Medical Center.

For more information, call (262) 741-2374.

Family-Friendly Events

The Elegant Farmer, 1545 Main St. in Mukwonago, is hosting monthly family-friendly events January through December 2009, featuring fun activities and a variety of delicious food specials.

From its well-known Autumn Harvest Festival to its annual summer events including Dairylicious Days, Old Fashioned Farm Fair and the Do-Si-Do Family Square Dancing Hoedown, The Elegant Farmer continues to be one of Southeast Wisconsin's family destinations providing a wonderful shopping experience and "simply the best" foods from its Farm Kitchen Bakery, Deli & Market. This family-owned and operated business continues to offer the same quality and excellence it has become known for during its 62 years in business.

For more information, call (262) 363-6770 or visit www.elegantfarmer.com.

The Good Life

If 2009 is the year you turn 55 or better, you may qualify to join the Good Life Club at Citizens Bank of Mukwonago. Club benefits include free checking, free personalized checks, free insurance review, free financial counseling, free traveler's checks, cashier's checks and money orders, registered key chain, safe deposit box discount club newsletter and additional free services, such as notary and medallion service, photo copies and telephone transfers.

Seminars for 2009 include: Jan. 21 – Senior Stay Active & Alive: A Healthy Start For The New Year; Feb. 18 – New Technology: Cyber Knife Brings New Hope For Cancer Patients and Stress Reduction Strategies; March 11 or 18 – Getting Your Legal & Financial House in Order.

Day Trips for 2009 include: Feb. 11 – Those Fabulous Fifties – Part 2 at the Fireside; March 17 – Titanic: The Artifact Exhibition; April 1 – The Fantastics at the Fireside.

To join, you must be 55 or older and maintain \$5,000 in deposits at Citizens Bank of Mukwonago or with CBM Insurance & Investment Services. For more information or to join, contact Lindy Bowers or Dawn Wolf at (262) 363-6500 or visit www.citizenbank.com.

Banners and Frames

New for 2009 at Dynamic Awards & Apparel, LLC, 718 Main St. in Mukwonago, is the addition of banners to Scott Iltoncaie's business of providing awards, engraving services, screen printing, embroidery, apparel, labels and signs. Iltoncaie will now be able to create

banners up to 48 inches with multi-colored graphic images, including photographs and logos. For more information or a quote, call (262) 363-2005.

The Elegant Framer is Iltoncaie's new custom frame shop, located next door to Dynamic Awards & Apparel at 714 Main St. The shop offers custom framing services and products. For more information, call (262) 363-5006.

Accommodating The Disabled

C&W Remodeling in East Troy has been remodeling kitchen and bathrooms since 1947 and has expanded its services to specialize in remodeling to help physically challenged people. Some of the work they can do includes: grab bars, widening door openings, custom showers, Swanstone solid surfaces, showers and countertops, walk-in tubs and whirlpools, ADA-compliant vanities and kitchens, tile and marble. They are dedicated to improve and create new innovations for the physically challenged.

For more information, call (262) 642-9233 or visit hagjm@wi.rr.com.

Summer Concerts

David Shaw, general manager of Alpine Valley Music Theatre, has announced the first concert date for the Summer of 2009. Phish will perform on Saturday, June 20 and Sunday, June 21 at the local concert venue. The parking lot will open at 3 p.m. each day and participants need to show their concert ticket in order to get into the parking lot. The gates will open at 5 p.m. and the band plays at 7 p.m. Tickets go on sale Friday, Jan. 30 and can be purchased through livenation.com.

Cruisin' Into The New Year

Executive Manager Maria Burgos of L'Bri Pure n' Natural Skincare will start the new year on a cruise to Cozumel in January as a reward for her sales achievements. She reports that her team grew by 62 percent over last year. For more information, call (414) 607-8884.

Chamber Announces Joy Winners

Winners in the Find the Joy in East Troy drawing were announced Dec. 6, following the arrival of Santa and his entourage to East Troy's Village Square.

Joy, the official Find the Joy in East Troy mascot (portrayed by Rebekah Hahlbeck), drew the winners from the entries in this year's retail promotion, which asked shoppers to find the Joy Items at the 25 participating businesses over a two-week period.

The retail promotion, organized by the Advertising and Marketing Committee of the East Troy Area Chamber of Commerce, sought to draw attention to the many local shopping opportunities. Members of the committee include: Barb DeLap of DeLap's Hardware & Rental, Dan Heidelmeier of Not Just Beans, Marie Koch of CSI Media, George Scott of Lynch Chrysler Dodge Jeep, Jim Maklary of Maklary Technology Consulting and Therese Philipp of Michael Fields Agricultural Institute, along with Katie Matteson, the Chamber's executive director.

Additional help for the event came from the East Troy Area Historical Society members, who shared historical tidbits about East Troy on the Joy Shuttles, sponsored by James R. Taylor and Sons, which transported shoppers around town during the Find the Joy in East Troy Shopping Spree on Dec. 6.

Grand prize winners included Neva DeGrave of East Troy, who won a ski or golf getaway weekend for two at Alpine Valley Resort (\$550 value); Jeanette Sonderegger of East Troy, who won \$500 in Chamber Bucks that she can redeem at Chamber member businesses; and Butch Spaight of



See WINNERS, back page



Roofing • Gutters



Siding • Barns



Windows • Single-Ply Roofs

James R. Taylor
And Sons
3 Generations of Quality Work!

(262) 642-7970
Fully Insured • Free Estimates

237495



Not Just Beans

1 FREE Bakery Item with Your Coffee Purchase!

With this coupon. Limit 1 per person per visit. Expires 3-31-09.

3268 W. Main St., East Troy
Village Marketplace
(262) 642-2353
Hours: Mon.-Fri. 6:30 a.m.-5:30 p.m.
Lunch 11 a.m.-2 p.m.; Sat. 7 a.m.-4 p.m.
Sun. 8 a.m.-1 p.m.

- Trojan Apparel
- Willow Tree Angels
- Wood Wick Candles
- Webkinz
- Jewelry
- Steve's Wood Products
- Home Decor Gifts

Lunch Served Monday through Saturday 11 a.m.-2 p.m.

250990

24/7  NO CONTRACTS

Snap Fitness 24/7 East Troy
2541 East Main Street
East Troy, WI 53120
GET FIT FOR THE NEW YEAR!
Special package pricing includes:
3 months membership
3 months unlimited tanning
3 sessions with a certified personal trainer
Fitness consultation
\$185.00
(single membership)

SNAP
FITNESS-24-7
fast • convenient • affordable

easttroy@snapfitness.com
(262) 642-1645

This offer does not include access card/enrollment fees for new members.
Offer valid through 3-31-09. Some restrictions apply.

250949

Simply the Best

 **The Elegant Farmer**
Farm Kitchen, Bakery, Deli & Market

Weekend Events & Special Offerings

February's Cherry Jubilee
March's Maple Fest
April's Cheep, Cheep 4-H Fun



Garden Center
April 11-June 14
Plants & Flowers

Open Daily 8 a.m. - 6 p.m. • 1545 Main St., Mukwonago, Wis.
(262) 363-6770 • www.elegantfarmer.com

250986

Volunteers share joyous enthusiasm during holiday season

Those who braved the cold on Saturday, Dec. 6 experienced true joy in East Troy when the Santa Parade Train made its way down the tracks on its mission to transport

By Katie Matteson
CHAMBER
EXECUTIVE
DIRECTOR

Santa and his entourage to the Village Square to light the Bob Barutha Christmas Tree. This magical event turns people of all ages into kids when they see Santa coming down the tracks. Most people don't know that the magic actually starts weeks before with the efforts of many dedicated volunteers. I had the pleasure of working with them this year and I have to tell you that their joyous enthusiasm is quite contagious.

This year it started with the wonderful students of the National Art Honor Society from East Troy High School who created the beautiful murals that were illuminated on the bandstand. It was only about three weeks between the day that Village of East Troy Department of Public Works superintendent Tom Ross-miller told me about the tradition that hadn't taken place since the early 1970s and when the murals were completed. I'm so grateful to NAHS adviser Lori Klingbiel for supporting the project and letting me present it to her students and DPW workers Jason Equitz and Doug Gauger (who built the panels) for their help in transporting and building the display. Special thanks to the designers, Anna Gorman and Kayla Harmeyer, the other main painters, Jackie Carlson, Kayleigh Schwall, Megan Griffa, Lindsey Nusser, Olivia Drayna, Miranda Dunn, Rebecca Hahn and the other NAHS members who brain stormed on the overall ideas and helped paint.

The elves who helped the DPW crew complete the decorations on the village square included John O'Brien, Brian Schlueter and Hank Huerta from Wisconsin Oven Corporation (coordinated by Ken Frymark), along with Mike Barutha and Gary Neuman from the East Troy Fire Department, who put the lights on the Bob Barutha Memorial Christmas. Thanks to Steve DeLap, who donated the use of a lift to reach the top branches.

Jeff Standafer and Rich Ambrose from Citizens Bank of Mukwonago, along with George Scott from Lynch Chrysler Dodge Jeep, donated their time on Friday morning

to help local school children hang their hand-made ornaments on the tree.

Next on Santa's list is the great bunch from the East Troy Electric Railroad, especially Jim Pratt, Andy Witkowski, Chuck Sabatino, Chris and Lisa Sacharski and Bev and Alan Bobholz, who joyfully decorated and operated the Santa Parade Train. DeLap's Hardware & Rental donated additional decorations for this year's presentation and decorating help came from Barb DeLap and Carl Matteson.

The ETER also generously donated the use of their Christmas Express passenger train as a Chamber fundraiser. Santa's Special Trolley followed the Santa Parade Train and gave riders a unique perspective. Girl Scouts from Troop No. 4189, led by Shannon Evjen, Carol Mast and Gina McFarland, entertained riders by singing Christmas carols.

The members of the Lake Beulah 4-H came through, filling the roles of the elves, bears, Rudolph and doll, as well as the Find the Joy in East Troy angel, portrayed by Rebekah Hahlbeck. Thanks to adviser Jackie Hahlbeck and her crew: Callen Sanfelippo, Tristan Sanfelippo, Kelsey Combs, Ally Jaeck, Kaity Jaeck, Lisa Heidelmeier, Jason Heidelmeier, Meghan Griffin, Owen Goedland, Elizabeth E. Heine, Christopher Swayze, Madelyn Goedland, Marcia Bisbee, Garrett Bisbee, Stuart Bisbee, Bryant Bisbee, Anna Goedland and Stevie Shea.

Students from Ed Wiegman's East Troy High School's Manufacturing Practicum, including Tommy Beland, Neal Hardaker and J.R. Paczkowski, did their part by assembling and taking down the Santa house. Thanks also to George Scott at Lynch Chrysler Dodge Jeep for storing the house and transporting the parts back and forth from the square.

Thanks to Jay Huenink and the East Troy Community Band for leading the Christmas carols on the village square for those awaiting Santa's arrival and to John Alexander for serving as MC.

Kim Billings from Kimberly Ann Photography braved the cold to take complimentary photos of the children visiting with Santa, with processing donated by Dan and Laura Heidelmeier of Not Just Beans.

And finally, thanks to Jim Maklary (you know who) and Rae Equitz (portraying Mrs. C for the 25th year).



KATIE MATTESON *Good Neighbors*

Students from Ed Wiegman's East Troy High School Manufacturing Practicum assembled and took down the Santa house on the Village Square. Pictured, from left: Wiegman, Tommy Beland, Neal Hardaker and J.R. Paczkowski.



KATIE MATTESON *Good Neighbors*

The Village of East Troy's Department of Public Works decorated the Village Square, with special attention to the murals that East Troy High School's National Art Honor Society students created. Pictured, from left: Doug Gauger, Jason Equitz and Steve Nelson.



KATIE MATTESON *Good Neighbors*

Above, John O'Brien, Brian Schlueter and Hank Huerta from Wisconsin Oven Corporation put up the lights on the Bob Barutha Memorial Christmas Tree. At right, the brown bear (portrayed by George Scott) welcomed children to the Village Square when they came to decorate the Bob Barutha Memorial Christmas Tree on Dec. 5.



KATIE MATTESON *Good Neighbors*

Members of the Lake Beulah 4-H Club brought the characters of the elves, bears, Rudolph, doll and the Joy angel to life for the Santa Parade Train and the arrival of Santa on the Village Square.



KATIE MATTESON *Good Neighbors*

Above, Santa and Mrs. Claus joyfully made their annual visit to East Troy. At right, members of East Troy High School's National Art Honor Society created four beautiful murals that were illuminated on the bandstand during the holiday season. Pictured, from top: Lindsey Nusser, Anna Gorman, Kayleigh Schwall and Megan Griffa.



PHOTO SUBMITTED *Good Neighbors*



KATIE MATTESON *Good Neighbors*

Joy the Angel (portrayed by Rebekah Hahlbeck), the Find the Joy in East Troy mascot, accompanied by her elf friends (portrayed by Ally Jaeck and Kaity Jaeck) traveled on the Joy Shuttles, which transported shoppers around town during the Find the Joy in East Troy Shopping Spree on Dec. 6. Members of the East Troy Area Historical Society, including Doris Kranitz and Martha Olson, shared historical tidbits with those who rode the shuttle.



KATIE MATTESON *Good Neighbors*

East Troy Area Chamber of Commerce


Expanded Membership Directory 2009

Business / Organization Name	Address	City	State	Zip	Telephone Number	E-mail address	Web site address	Membership Category
Al Smith's Saloon Located on the Historic Square, a unique turn of the Century gathering spot with sports, games and music. Offering beverages, pizza and a good time for all!	2878 Main St.	East Troy	WI	53120	(262)642-4446			Restaurants & Bars
Allan Integrated Control Systems, Inc. Allan ICS designs and implements Integrated Instrumentation and Control Systems for water and wastewater plant operations. Our in-house engineering staff provides us with complete programming utilizing many types of PLC and DCS based systems. We have successfully integrated SCADA systems for the World's largest water filtration and wastewater treatment plants, as well as for small communities throughout Wisconsin and Illinois.	2021 Beulah Ave. / P.O. Box 888	East Troy	WI	53120	(262)642-7800	azess@allan-ics.com	www.allan-ics.com	Industrial & Manufacturing
Alpine Valley Music Theatre An outdoor theatre providing entertainment to the community for the months of May through September. We are closed for the Winter.	W2699 Highway D	Elkhorn	WI	53121	(262)642-4400	davidshaw@livenation.com	www.alpinevalleymusic.com	Attractions
American Family Insurance - Jason Tess As your agent, I believe there's more to insurance than the policy itself. It's about providing dependable protection and service. That's why earning your trust is my policy for Auto, Home, Commercial, Health, Life and IRAs.	2886 Main St. / P.O. Box 195	East Troy	WI	53120	(262)642-3911	jtess@amfam.com	www.jtess.com	Insurance Agencies
American Glass & Window, LLC Over 15 years Quality Workmanship - Glass Division: Auto Glass, Thermopanes, Custom Shower Doors, & Custom Mirrors, Tabletops, etc. Renovation Division: Vinyl Windows, Entry and Storm Doors, Crane Vinyl Siding, Soffit, Fascia Trim - Mobile Service - Free Estimates.	516 N. Lincoln St.	Elkhorn	WI	53121	(262)642-1695	staciamericanglass@yahoo.com	www.theglassguys.com	Retail
American Legion Loomis - Martin Post 188 "We're Still Serving." Veterans Memorial and social affairs. We aid with citizenship programs, flag recognition, grave decorations and ceremonial activities. We also have school programs including Badger Boys State, Government Day, Boy Scout chartering and an oratory contest, as well as American Legion Baseball.	2870 School St. / P.O. Box 775	East Troy	WI	53120	(262)470-4694	tomkostop@yahoo.com		Organizations & Clubs
Associated Bank At Associated, we're proud of our long and rich tradition of being the preferred provider of financial services for businesses and individuals in the communities we serve. Serving the East Troy community with warm cookies and friendly smiles!	3292 Main St. / P.O. Box 871	East Troy	WI	53120	(262)642-3941	deborah.curtis@associatedbank.com	www.associatedbank.com	Banks
Aurora Health Center Services include: Lab, X-Ray, Geriatric Assessment Center, Podiatry, Pediatrics, Family Practice, Surgery, OB/GYN, Acupuncture.	2483 Corporate Circle	East Troy	WI	53120	(262)642-2000	wendy.engel@aurora.org	www.aurora.org	Health Care & Wellness
Aurora Pharmacy Aurora Pharmacy was established in 1992 and has grown to over 129 pharmacies in the State. Providing convenient and affordable health care services and products, East Troy Aurora Pharmacy is a full service pharmacy. An extensive gift and card selection is also included.	3284 W. Main St.	East Troy	WI	53120	(262)642-5800	keith.witt@aurora.org		Health Care & Wellness
Bay View Veterinary Clinic S.C. We provide quality preventative, medical and surgical care for your pets in a manner that is flexible to your needs. We offer a clean hospital, courteous, caring and knowledgeable staff, respect for all living things, and an Exceptional Experience for every client.	890 Main St.	Mukwonago	WI	53149	(262)363-9993		www.bayviewvet.com	Veterinarians
Big Brothers Big Sisters of Walworth County Big Brothers Big Sisters provides positive role models/adult mentors to area children between the ages of 6-14. BBBS matches youth and volunteers together to assist children from primarily single-parent families in reaching their fullest potential socially, emotionally and academically.	1545 Hobbs Drive / P.O. Box 655	Delavan	WI	53115	(262)728-8865	bbbsbrooke@netzero.com	www.bbbs4kids.org	Organizations & Clubs
Bright Beginnings Day Care, LLC Bright Beginnings offers childcare for ages 4 weeks through school age. We offer hot lunch, a theme-based curriculum, large indoor muscle room, two playgrounds, qualified staff, a secured entry way, all in a new facility.	2541 Main St.	East Troy	WI	53120	(262)642-3904	nina@brightbeginnings-daycare.com	www.brightbeginnings-daycare.com	Schools & Day Cares
Buell Motorcycle Company Buell Motorcycle Company is a subsidiary of Harley-Davidson Motor Company and is responsible for the design and production of Buell Motorcycles! Buell has been located in East Troy since 1993.	2799 Buell Drive	East Troy	WI	53120	(262)642-2020	kim.tordik@buell.com	www.buell.com	Industrial & Manufacturing
Burger King Burger King carries burgers, french fries, frozen cakes, etc. Good food at reasonable prices. Have it your way with the help of our friendly staff.	2951 E. Main St.	East Troy	WI	53120	(262)642-2951		www.burgerking.com	Restaurants & Bars
Butterfly Life Family Child Care & Preschool Nurturing care with learning activities that develop language and social skills. We are state licensed, on the USDA food program, provide active kids class, preschool & toddler class and a wildlife habitat outdoor classroom. Large outdoor play space in a country setting. Hands on farm activities. ECO-friendly all natural organic food served. Certified by the National Wildlife Federation as a Schoolyard Habitat site.	W2491 Swoboda Road	East Troy	WI	53120	(262)684-5135	jenmartinez@wi.rr.com	www.vintagehobbyfarm.com	Schools & Day Cares
C & W Remodeling Since 1947. Complete kitchen and bathroom remodeling. Specializing in disabled bathrooms and kitchens. We know that your home is probably your biggest investment. C&W is committed to treating your home in a professional and respectful manner that you and your home deserve.	N8285 Weber Road	East Troy	WI	53120	(262)642-9233	hagjm@wi.rr.com		Contractors & Construction
Camp Dewan When you stay at Camp Dewan, you own Camp Dewan. It's the only recreation location where your group, and only your group, enjoys exclusive use of all camp facilities. 55 acres all to yourself. Completely modern facilities.	N6360 Church Road	Burlington	WI	53105	(262)642-9797	jdewan@aol.com	www.campdewan.com	Lodging & Campgrounds
Robert Diamond Century 21 Affiliated Real Estate brokerage services specializing in Town & Country, Lakes, Farms and Vacant Land. "When you're ready to buy or sell, Diamond leaves no stone unturned!"	2883 Main St.	East Troy	WI	53120	(262)903-5506	rdiamond@c21affiliated.com	www.robertdiamondhomes.com	Real Estate
CenturyTel, Inc. The leading provider of communications, high-speed Internet and entertainment services in small-to-mid-size cities through our broadband and fiber transport networks. CenturyTel delivers advanced communications with a personal touch to customers in 25 states.	244 Industrial Drive	North Prairie	WI	53153	(262)392-5222		www.centurytel.com	Telecommunications
Chortek & Gottschalk, LLP CPA firm specializing in new business start up, Quickbooks Certified Pro, Tax and Tax Planning, Audit, Accounting and Business Valuation.	550 Bay View Road Suite E	Mukwonago	WI	53149	(262)363-2930	djungen@c-gcpa.com	www.c-gcpa.com	Accountants & Financial Advisors
Citizens Bank of Mukwonago Chartered in 1892 as an independent community bank, Citizens Bank of Mukwonago remains committed to the communities it serves and the time honored principles of sound banking upon which it was founded.	2541A E. Main St. / P.O. Box 196	East Troy	WI	53120	(262)642-8456	dconrad@citizenbank.com	www.citizenbank.com	Banks
CSI Media LLC Free Community Publication Twice-Weekly Walworth County, Stateline News Beloit/Rockford, Janesville Messenger (Rock County), Commercial Printing, Chamber magazines and maps.	120 Wright St. / P.O. Box 367	Delavan	WI	53115	(262)728-3424	mkoch@communityshoppers.com	www.communityshoppers.com	Media
Country Inn & Suites We are a hotel with 51 rooms of which twelve are two room suites and 8 are jacuzzi and fireplace suites. We offer a complimentary continental breakfast. Pool and whirlpool are also available.	2921 O'Leary Lane	East Troy	WI	53120	(262)642-2100	cx_troy@countryinns.com	www.countryinns.com/easttroywi	Lodging & Campgrounds
Dave Hudec Law Offices LLC East Troy law firm that handles Social Security Disability, Supplemental Security Income and Worker's Compensation. Attorney David A. Hudec and Paralegal Teresa Romdenne have been assisting individuals with their disability claims since 1999. We handle disability claims throughout Wisconsin. If you need assistance with a disability claim, please contact our office at 262-642-7515 to schedule an appointment for a free consultation to discuss your claim for benefits. We have assisted many individuals in winning their disability claims, and we look forward to helping you.	2847B Buell Drive / P.O. Box 287	East Troy	WI	53120	(262)642-7515	davelaw@netwurx.net	www.dave-law.com	Attorneys
DeLap's Hardware & Rental Full line hardware store offering on-line purchasing in December. Rental department has large and small equipment, party supplies, tents, space walks, truck and trailer rentals. Pet food and supply department, paint and custom color matching. "We help you Do It Best"	3288 W. Main St. / P.O. Box 980	East Troy	WI	53120	(262)642-3344	delapsads@wi.rr.com	www.delaps.doitbest.com	Retail
Dynamic Awards and Apparel, LLC Provider of Awards, Engraving Services, Screen Printing, Embroidery, Apparel, Banners, Labels, Signs.	718 Main St.	Mukwonago	WI	53149	(262)363-2005	scott@dynamicawards.com	www.dynamicawards.com	Signs, Printing & Promotional
East Troy Acupuncture East Troy Acupuncture is a Chinese Medicine Clinic offering services in Acupuncture, Chinese herbs and Nutritional support. We treat many conditions and specialize in the care of acute/chronic pain, headaches and migraines.	3066 Main St. Suite 104 / P.O. Box 885	East Troy	WI	53120	(262)642-4325	Brandon@EastTroyAcupuncture.com	www.EastTroyAcupuncture.com	Health Care & Wellness
East Troy Area Historical Society Not-for-profit 501c3 volunteer organization dedicated to preserving and sharing the rich history of the entire East Troy Area, including the Town of East Troy, Troy, LaFayette and Spring Prairie as well as the Village of East Troy.	P.O. Box 722	East Troy	WI	53120	(262)642-5530	info@easttroyhistory.org	www.easttroyhistory.org	Organizations & Clubs
East Troy Community Band, Inc. The East Troy Community Band is an all-volunteer non-profit that provides a free concert series in the Village of East Troy ("Thursday Nights on the Square") and a community band in the City of New Berlin. Jay Huenink is the director.	3010 Main St.	East Troy	WI	53120	(262)642-5411	jhuenink@wi.rr.com	www.etband.com	Organizations & Clubs
East Troy Community School District East Troy Community School District is about providing and promoting a learning community each and every day. We have five buildings with a district enrollment of 1708. Please visit www.easttroy.k12.wi.us	2043 Division St.	East Troy	WI	53120	(262)642-6710	hibchr@easttroy.k12.wi.us	www.easttroy.k12.wi.us	Schools & Day Cares
East Troy Education Foundation The goal of the East Troy Education Foundation is to make a positive impact on the students in the local school system. The Foundation, a 501(c)3 organization, engages in multiple fundraisers and also accepts monetary gifts from corporations and individuals.	2546 E. Main St. / P.O. Box 326	East Troy	WI	53120	(262)642-2530	zpillath@firstcitizensww.com		Organizations & Clubs
East Troy Electric Railroad An educational and historic non-profit Wisconsin Corporation with a presentation of electric railroad transportation for the period of the 1890's through the 1950's. Come and ride with us on historic trolleys and dining cars while experiencing our museum and gift shop. Group Tours and Charters: Charter any of our cars for Birthdays, Company outings, Anniversaries and Weddings. Accommodations up to 100 people. Call for availability and rates.	2002 Church St.	East Troy	WI	53120	(262)642-3263	bev@easttroyrr.org	www.easttroyrr.org	Attractions
East Troy Family Dental Center We provide all the aspects of general Family Dentistry including Preventative (Hygiene), Restorative including Esthetic dental, Orthodontics, Root Canals, Oral Surgery, Crowns, Bridges, Dentures and Implant Restoration.	2481 Executive Drive / P.O. Box 642	East Troy	WI	53120	(262)642-5695	wyzgyz1@yahoo.com		Health Care & Wellness
East Troy Fitness Center, LLC Full service gym with locker rooms, showers with sauna and massage services. Aerobics classes available. Choice Martial Arts offers classes for all ages, along with self-defense training.	2111 Lenck Ave. / P.O. Box 134	East Troy	WI	53120	(262)642-9640			Health Care & Wellness
East Troy House Historic Inn & Tavern Wisconsin's oldest operating inn and tavern since 1842. Open at 11:00 a.m. daily except Monday. Serving sandwiches, burgers, soups and salads.	2093 Division St. / P.O. Box 919	East Troy	WI	53120	(262)642-7100	dallen@wi.rr.com		Restaurants & Bars
East Troy Lioness Club Service organization dedicated to serving our community, our state and those in need around the world. We meet the fourth Tuesday of the month (dinner meeting) at 7 p.m. Location varies.	1756 Thomas Drive	East Troy	WI	53120	(262)642-5245	kfrymark@wi.rr.com	www.easttroylioness.org	Organizations & Clubs
East Troy Lions Club We are a service organization serving the community as well as projects such as vision and hearing impaired, and local projects.	P.O. Box 53	East Troy	WI	53120	(262)642-3171	roadrunnerbuses@centurytel.net	www.easttroylions.org	Organizations & Clubs
East Troy Marine, Inc. Sales and repairs of Polaris Snowmobiles, ATVs, and Rangers, boat winterization, boat service, boat storage, Evinrude E-Tec motor sales, Triton trailer sales, Weeres Pontoon sales, Polaris and FXR clothing and accessories.	2708 Main St.	East Troy	WI	53120	(262)642-5150	kathyrose@centurytel.net	www.easttroymarine.com	Retail
East Troy Shell We are a 24 hour travel center under the Shell brand. We offer DNR licensing, DOT license renewal. We carry liquor, wine and ice cold beer. Browse our gift shop.	2526 E. Main St. / P.O. Box 444	East Troy	WI	53120	(262)642-4624	easttroypoint@centurytel.net		Gas Stations
East Troy Tax Service LLC East Troy Tax Service has been providing personalized income tax and payroll services to the community for over 30 years.	2893 Main St. Suite C / P.O. Box 327	East Troy	WI	53120	(262)642-3058	etroytax@aol.com		Accountants & Financial Advisors

East Troy Area Chamber of Commerce

Expanded Membership Directory 2009

Edward Jones Investments Edward Jones is committed to providing personalized investment service to individuals.	2098 Church St. / P.O. Box 673	East Troy	WI	53120	(262)642-5717	jim.jakscht@edwardjones.com www.edwardjones.com	Accountants & Financial Advisors
Edwards YMCA Camp & Retreat Center Year round Camp and Retreat Center situated on the shores of Lake Beulah. Specializing in Summer Resident and Day Camp, Family Camp, Environmental Education and weekend groups.	N8901 Army Lake Road	East Troy	WI	53120	(262)642-7466	jheimos@campedwards.org www.campedwards.org	Camps & Conference Centers
Envirocon Inc. Professional landscape contractor for commercial and residential properties.	N8492 Division St. / P.O. Box 664 Muk.	East Troy	WI	53120	(262)363-5579	rebeccal@envirocon.us www.envirocon.us	Outdoor Services
Family Rehab. Clinic We provide Physical and Occupational Therapy to children, teens, adults and seniors. Services include treatment for pain, sports injuries, orthopedic and neurological conditions and developmental delays in children. All major insurances are accepted. Appointment times are flexible.	3066 W. Main St. Suite 106	East Troy	WI	53120	(262)642-3511	rhebar@centurytel.net www.mukwonagofamilyrehab.com	Health Care & Wellness
First Citizens State Bank - East Troy Office REAL PEOPLE, REAL SERVICE, REAL COMMUNITY BANKING First Citizens State Bank offers a wide variety of products and services. Locally owned and operated. Large enough to serve you, small enough to care. Open Mon. thru Thurs. 9:00 a.m. to 5:00 p.m., Fri. 9:00 a.m.- 6:00 p.m., Sat. 9:00 a.m.- Noon. Drive-up open 8:00 a.m., Mon. - Sat.	2546 E. Main St. / P.O. Box 866	East Troy	WI	53120	(262)642-2530	lszolwinski@firstcitizensww.com www.firstcitizensww.com	Banks
First Family Financial Inc. A business serving seniors, a great generation. Specializing in estate planning, 401K rollovers and IRAs made E-Z.	7 W. Walworth St. / P.O. Box 1012	Elkhorn	WI	53121	(262)723-3211	aaskmentordale@yahoo.com	Accountants & Financial Advisors
Fleury's Body Repair, Inc. Complete auto body repair.	1006 Main St.	Mukwonago	WI	53149	(262)363-8555	jfleury@centurytel.net www.fleurybodyrepair.com	Auto Sales & Service
Gateway Technical College - Kenosha Gateway Technical College collaborates with communities in Kenosha, Racine and Walworth counties to ensure economic growth and viability by providing education, training and leadership, and technological resources to meet the changing needs of students, employers and communities.	3520 30th Ave.	Kenosha	WI	53140	(262)564-2662	sklbas@gtc.edu www.gtc.edu	Universities & Technical Colleges
Hackbarth Builders, Inc. Hackbarth Builders, Inc. has been a leader in custom home building and remodeling since 1979, serving Southeast Wisconsin specializing in waterfront and country homes.	2096 Church St. / P.O. Box 316	East Troy	WI	53120	(262)642-9601	vicki@hackbarthbuilders.com www.hackbarthbuilders.com	Contractors & Construction
Home Helpers/Direct Link Home Helpers provides personal care in homes, retirement communities, nursing homes, hospitals, rehab. centers and more. We provide experienced dependable caregivers that truly enjoy helping others. Our caregivers are employees that are bonded and covered by workers compensation insurance. We provide services from 2 to 24 hours of care.	P.O. Box 63	Burlington	WI	53105	(262)757-0012	aaronnelson@homehelpers.cc www.homehelpers.cc	Health Care & Wellness
Hometown Sausage Kitchen Makers of fine sausage, located in East Troy. Retail store is open Sat, Sun 8:00 - 7:00. We offer roasting pigs, lambs, chickens, for picnics and parties up to 300 people. Specialists in processing deer and all other big game. Stop for a taste!	W1184 County Road L	East Troy	WI	53120	(262)642-3264		Retail
Horter Chevrolet Pontiac Inc. Serving the community since 1928. Check us out on our website at www.orderfromhorter.com for any of your transportation needs.	915 Main St. / P.O. Box 225	Mukwonago	WI	53149	(262)363-4061	thorter@centurytel.net www.orderfromhorter.com	Auto Sales & Service
Ivan's Unique Dining "On the Square" Step Back in time ... Join us for a relaxing lunch, dinner, glass of wine or cocktail and enjoy the ambience of our beautifully restored 1875 Historic Building. Bistro-style offerings including speciality sandwiches, pasta, salads, seafood and steaks. Banquet facilities up to 150 in Ivan's Backstage. See you soon!	2087 Division St.	East Troy	WI	53120	(262)642-7107	dallen@wi.rr.com	Restaurants & Bars
J. Lauber's Ice Cream Parlor Step Back In Time in this authentic 1920's soda fountain and corner store! A 4 page menu of delicious ice cram treats served to your booth or table. 78 RPM jukebox, large candy case and hundreds fo items on display for your viewing. Summer Hours: June 7th thru August 31st Noon to 10:00 p.m. Spring & Fall May 3rd thru October 19th Mon. thru Fri., Call for hours. Sat. & Sun., Noon to 10:00 p.m.	2010 Church St.	East Troy	WI	53120	(262)642-3679		Restaurants & Bars
James R. Taylor & Sons Inc. Roofing, Siding, Windows, Gutters. Three generations of quality work, fully insured.	2115 Division St. / P.O. Box 163	East Troy	WI	53120	(262)642-7970	roofing@jrtaylorandsons.com www.jrtaylorandsons.com	Contractors & Construction
Joan I. Palmer Insurance Agency, Inc. Providing Insurance and Financial Services.	3278 W. Main St. / P.O. Box 933	East Troy	WI	53120	(262)642-2038	joan.palmer.c10k@statefarm.com	Insurance Agencies
Johannesen-Farrar, Inc. Personal, Business, Life, Health Independent Insurance Agency serving Southeastern Wisconsin since 1931.	512 E. Walworth Ave./ P.O. Box 347	Delavan	WI	53115	(262)728-2631	office@jfinsurance.com www.jfinsurance.com	Insurance Agencies
JT Interiors & Café Complete residential and commercial interior design services-window treatments. Full coffee bar-bakery, awesome soups and sandwichs Monday-Friday 11:00-2:00.	2887 E. Main St. / P.O. Box 862	East Troy	WI	53120	(262)642-2262	jane@jtinteriorsinc.com www.jtinteriorsinc.com	Interior Design
Kimberly Ann Photography, LLC Kimberly Ann is a custom on location photographer, specializing in babies, children, families and high school seniors. Come for the memories and enjoy the experience at www.kimberlyannphotography.com		East Troy	WI	53120	(262)492-3893	kimberlyannphotography@yahoo.com www.kimberlyannphotography.com	Services
Kiwanis Club of Greater East Troy Kiwanis is a global organization of volunteers dedicated to changing the world, one child and one community at a time. The local Kiwanis Club is dedicated to serving the youth and seniors of the community and welcomes new members.	3161 Main St.	East Troy	WI	53120	(262)642-7404	kalmb4@aol.com	Organizations and Clubs
Knutson Bros. II LLC Design/Build Residential Remodeling Company.	W792 Potters Circle	East Troy	WI	53120	(262)642-5211	debbie@kb2remodelers.com www.kb2remodelers.com	Contractors & Construction
L'Bri Pure n' Natural Skincare/Cosmetics/Nutritional L'Bri skin care products are free of synthetic fragrances and coloring agents, parabens, sodium lauryl/laureth sulfate, propylene glycol, drying alcohols and pore clogging waxes. Our skin care formulas help prevent aging, reverse fine lines and wrinkles, smooth out skin irregularities and heal and nourish the most sensitive skin including those with rosacea, eczema and psoriasis.	W2294 W. Bay Drive	East Troy	WI	53120	(414)607-8884	butterflywings43@yahoo.com www.maria.lbri.com	Services
Lakeside Painting, Inc. Residential, commercial, and industrial painting including exteriors, interiors, powerwashing, hanging of wallcoverings, faux and specialty finishes, and electrostatic painting.	2892 Austin St. / P.O. Box 106	East Troy	WI	53120	(262)642-9445	info@lakesidepainting.com www.lakesidepainting.com	Contractors & Construction
Lawn Doctor of East Troy, Mukwonago, Waukesha For nearly four decades, Lawn Doctor has been providing the highest quality lawn care, trees & shrub care and pest control services to our customers. We take great pride in keeping lawns healthy for life.	W325 County Road L / P.O. Box 973	East Troy	WI	53120	(262)366-7736	group802@lawndocor.com www.lawndocor.com	Outdoor Services
Leibinger Sales, distribution, and technical support for industrial printing equipment sold in North and South America.	2702-B Buell Drive	East Troy	WI	53120	(262)642-4030	jmueller@leibingerusa.com www.leibinger-group.com	Industrial & Manufacturing
Little Angels Learning Center Quality child care for children 6 weeks to 12 years of age. 3 and 4 year old preschool programs offered September through May. Daily hot lunches included.	2141 Mill St. / P.O. Box 603	East Troy	WI	53120	(262)642-7002	play@littleangelswi.com www.littleangelswi.com	Schools & Day Cares



Amato Ford

Now Has

WARRANTY FOR EVER!

True Peace of Mind FOREVER

“At Amato Ford, We’re Driven to Make You Happy!”

Every eligible new and pre-owned car comes with a lifetime powertrain warranty. Call or stop in for details.

Your #1 Ford dealer has just gotten even better!

235656

JOHN AMATO FORD

1015 MAIN STREET, MUKWONAGO

AMATO Automotive Group

Monday-Friday 8-8; Saturday 8-5

www.amatoauto.com (262) 363-3085

NO ETHANOL in our premium grade v-power!

Open 24 Hours



East Troy Point Shell

Just off I-43 at Hwys. ES & 20 • (262) 642-4624



LIVE BAIT DNR LICENSES DOT REGISTRATION FREE INTERNET ACCESS

Now Open Saturdays for Service!

LYNCH EAST TROY

2606 Main St., East Troy (262) 642-4700 • www.shoplynch.com

Small Town Service... Big City Savings!

HOME OF THE \$19.44 OIL CHANGE!

CHRYSLER DODGE Jeep

NEW • USED • SERVICE • PARTS • TIRES • COMMERCIAL TRUCKS • WE SERVICE SPRINTERS

• Complete Accounting Services

• Quickbooks Conversions & Training

• Personal, Business & Trust Tax Preparation

• Bookkeeping Services

• Payroll Services


• Tax Planning

• Consulting Services

PAUL J. NYFFELER CPA S.C.

E-mail: pnyffeler.cpa@centurytel.net

The Bottom Line Is Accuracy!



642-8700

2481 Executive Drive, East Troy

Corner of Honey Creek Road and Executive Drive

East Troy Area Chamber of Commerce Expanded Membership Directory 2009

The Salvation Army - Army Lake Camp We coordinate top-quality, affordable group events and retreats for a day or weekend up to 425 people. We inspire Christ-centered love and commitment while sharing God's word. Specialties include outdoor education, geocaching, paintball and challenge course.	N8725 Army Lake Road	East Troy	WI	53120	(262)642-6400	jerry_stoddard@usc.salvationarmy.org www.armylakecamp.org	Camps & Conference Centers
Timber-lee Christian Center Timber-lee is a year-round Christian youth camp and retreat center. We offer 2nd-12th grade summer camp programs; fall and winter JR. and SR. High retreats; Outdoor Education programs for schools; and various community events. Check us out at www.timber-lee.com.	N8705 Scout Road	East Troy	WI	53120	(262)642-7345	timber-lee@timber-lee.com www.timber-lee.com	Camps & Conference Centers
Time Warner Cable-Business Class Time Warner Cable Business Class provides Voice, Video, Data and Security to improve the business community's connectivity.	1320 N. Martin Luther King Jr. Drive Milwaukee	WI	53212	(414)430-8154	clark.jester@twcable.com	www.twcabc.com	Services
Trim-N-Tidy Cleaners We do it your way. From sweaters, suits, ties, coats, jackets, trousers, dresses & shirt laundry to drapery cleaning, suede and leather services, pillow cleaning, alterations and repairs, shoe repair and wedding gown preservation. Other locations include Mukwonago (363-4111) and Waterford (534-2040).	2121 Church St. / P.O. Box 434	East Troy	WI	53120	(262)642-7396		Services
Video Playground, Inc. Video Playground is your full service video store. We rent videos, games, dvd's, game systems, vcr and dvd players. Don't forget your snacks and soda.	3076 W. Main St. / P.O. Box 557	East Troy	WI	53120	(262)642-7071	rrobran@wi.rr.com	Retail
Village of East Troy Local Government	2106 Church St. / P.O. Box 166	East Troy	WI	53120	(262)642-6255	voet@easttroy-wi.com	www.easttroy-wi.com Government Agencies
Walworth County Visitors Bureau The Walworth County Visitors Bureau provides leadership, guidance and assistance to businesses and organizations of Walworth County. We also promote tourism to visitors and residents by providing information on activities, events, attractions and destinations in the area.	203 West Walworth St. / P.O. Box 1015	Elkhorn	WI	53121	(262)723-3980	info@visitwalworthcounty.com	www.visitwalworthcounty.com Organizations & Clubs
Wanezek Family Dentistry S.C. Our office offers family dental care with a caring touch. We are open Monday - Friday, with evening hours available. New patients are welcome! Ask about our one visit CEREC crowns.	3278 W. Main St. / P.O. Box 15	East Troy	WI	53120	(262)642-5881	wanezekfd@hotmail.com	Health Care & Wellness
Watertight WaterCare, Inc. We offer quality water treatment and conditioning products, bottled water and softener salt delivery. We have been serving all of southeast Wisconsin since 1992. Call today for a free water test and quote.	119 S. 2nd St.	Waterford	WI	53185	(262)534-2300	gene.watertight@gmail.com	www.watertightwatercare.com Contractors & Construction
Waukesha Memorial Hospital	725 American Avenue	Waukesha	WI	53188	(262)928-7032	jean.schultz@phci.org	Health Care & Wellness
West 20 Ranch & Saddle Co. West 20 Ranch & Saddle Company showcases Wisconsin's largest collection of high quality saddles, tack, and clothing for the English or Western Rider. West 20 also offers a fine selection of jewelry, art and gifts for the western lifestyle enthusiast. Riding lesson, horse show and seminar schedules are available online or in the store. West 20 is open 7 days a week from 10-6.	W4812 Hwy 20	East Troy	WI	53120	(262)642-4272	julie@west20.com	www.west20.com Retail
Wildwood Apartments New Constructed Spacious Open Floor Plans Choose From 4 Layouts Some Units with Loft, 1 or 2 Bathrooms Just off I-43 and Hwy 20 On-Side Management Cathedral Ceilings Clubhouse and outdoor Pool Underground Parking Garage Private Entrance, Patio or Deck Central Air Appliances: Kitchen, Dishwasher, Washer & Dryer	3082 Main St. / P.O. Box 348	East Troy	WI	53120	(262)642-9286	terry@teronomy.com	www.teronomy.com Housing & Apartments Wooded Country Setting
Wisconsin Oven Corporation Wisconsin Oven Corporation manufactures industrial heat processing equipment for universally recognized companies all over the world. Our ovens are used in the manufacturing process of everything from household items to helicopter motors to missiles, etc.	2675 E. Main St. / P.O. Box 873	East Troy	WI	53120	(262)642-3938	jkent@wisoven.com	www.wisoven.com Industrial & Manufacturing

WINNERS, continued from Page 3

Mukwonago, who won Trek Bike (\$300 value) from Mielke's Sentry.

Other winners included: Patty Pesek, Joanne Frank, Russ Melichan, Ted Cvikota, Marge Fornear, Kevin Keckhaver, Alice Carbonelli, Stan Alger, Ken Starrett and Renee Kaczorowski, who each won gift certificates for four from the East Troy Electric Railroad; Tim Griffin, who won two Uniden digital cordless phones from CenturyTel; Glen Bishop, who won a gift basket of Farm Kitchen and Deli Favorites from The Elegant Farmer; Sam Zorowski, who won a holiday gift basket from Associated Bank; Dennis Hardaker, who won a packed Tool Works Mega Mouth Pocket Tool Bag from DeLap's Hardware & Rental; Eric Baumeister, who won a Tool Works Double Tray Tote Bag from DeLap's Hardware & Rental; Kristen Kennelty, who won a Double Ringer Pitching Horeshoes Kit from DeLap's Hardware & Rental; Sheila Newman,

who won a Crane Ultrasonic Humidifier from Aurora Pharmacy; Eric Kramer, who won a \$50 gas card from East Troy Shell; Amy Rankin, who won a \$50 gift card from East Troy Shell; Jeff Hofer, who won a \$75 gift certificate from Maklary Technology Consulting & Craig's Hobby; Gil Malmstrom, who won a \$25 gift certificate from Maklary Technology Consulting; Neal Hardaker, who won a \$25 gift card from Not Just Beans; Mark Schlitt, who won a \$25 gift card from Not Just Beans; Jill Starrett, who won a \$25 gift card from Burger King; Kelly Jaeck, who won a gift certificate from East Troy Acupuncture; Eddy Younghaus, who won a gift certificate from Country Inn & Suites; Kathy Koeffler, who won a \$25 gift certificate and sweatshirt from East Troy Marine; Doug Christianson, who won a one-year subscription to the East Troy News; Phil Christianson, who won a one-year subscription to the East

Troy News; Doris Kranitz, who won a \$40 gift certificate from Ivan's on the Square; Tina Keckhaver, who won a one-year subscription from the East Troy Times; Thomas Zeimentz, who won a one-year subscription from the East Troy Times; Larry Keckhaver, who won a free single one-month membership from Snap Fitness 24/7; Tom Kleiman, Vera Anderson and Laura Guthman, who each won a handmade blanket from the East Troy Middle School Builders Club; Jared Hickman, who won an American Girl Doll from CSI Media; Travis Melichar, who won a holiday gift basket from First Citizens State Bank-East Troy Office; CJ Alexander, who won a mercury ornament tree from JT Interiors & Café; Melissa Christiansen, who won a holiday gift set from Top Shelf Liquor; Kelly Cleveland, who won a Sponge Bob backpack from Koskinen Eye Clinic and Valerie Schwartz, who won a photo frame and computer bag from Citizens Bank.



Nearly as convenient
as having a branch in
your home.

Associated Bank is Wisconsin's most convenient bank, with more branch locations than any other bank.

- Hundreds of ATMs
- Live, 24/7 Customer Care Center – just call (800) 236-8866
- Extended hours at supermarket locations open seven days a week

Considering how easy it is to use our online banking, we practically have a branch in your home already. To open an account, stop in, call or visit associatedbank.com.

Serving the East Troy community with warm cookies and friendly smiles!

3292 Main Street
East Troy, WI 53120 • (262) 642-3941



Equal Housing Lender. Member FDIC and Associated Banc-Corp (9/08) AdConvWI

Wisconsin's most convenient bank. associatedbank.com



Make 2009 your
financial
wellness year!

Stop in today to see how
we can help you get your
finances in shape for 2009.



STATE BANK
EAST TROY OFFICE

Real People
Real Service
Real Community Banking

www.firstcitizensww.com
2546 E. Main St., East Troy
262-642-2530  800-236-8766

M-Th. 9 a.m.-5 p.m.; Fri. 9 a.m.-6 p.m.
Sat. 9 a.m.-12 noon
Drive-up Open 8 a.m., M-Sat.

Member
FDIC

