

POSTED STD
U.S. POSTAGE
Southern Lakes
Newspapers
PERMIT
POSTAL CUSTOMER

EAST TROY

SINCE 1836

AREA CHAMBER of COMMERCE

Good NEIGHBORS

A Publication of the East Troy Area Chamber of Commerce

EASTTROY.ORG

DECEMBER 2018

VOLUME 29, EDITION 4

Welcome home

LD's BBQ opens first brick & mortar in East Troy

By Vanessa Lenz
EXECUTIVE DIRECTOR
ET CHAMBER OF COMMERCE

Despite the rainy & chilly early-November weather, devoted BBQ fans were lined up for hours to score the first taste of specialty items at LD's BBQ grand opening Nov. 4.

Owner and pit master Leon Davis served up rare off the menu items for the occasion like beef short ribs, loaded baked potatoes, bacon wrapped meatloaf and more.

Beyond the revelers, the restaurant's grand opening signified more for not only Davis, but also the adoring hungry hordes that filled the newly opened 2,900 square-foot

LD's BBQ, 2511 Main St., recently opened its new completely renovated space in the former Burger King building in East Troy, more than doubling the restaurant space. Owner Leon Davis has made a home in East Troy for LD's BBQ, popular in southeastern Wisconsin for its ribs, smoked brisket, pulled pork and chicken and more.



SARAH MANKE Good Neighbors

See LD'S BBQ, Page 8

East Troy Brewery receives state grant for downtown development

The Village of East Troy is receiving a \$250,000 state grant to help finance the renovation of a vacant downtown building into a new microbrewery and restaurant – a project expected to provide a significant boost to the village's historic square.

The Community Development Investment Grant from the Wisconsin Economic Development Corporation will be used for restoration work on the former State Bank of East Troy building, which is more than 120 years old and has been vacant since 2017.

See BREWERY, Page 6

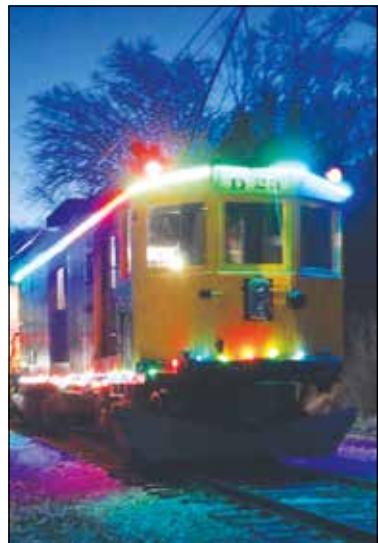
Santa Claus is coming Dec. 1

The East Troy Electric Railroad's Santa Parade Train will make its annual journey into downtown East Troy on Saturday, Dec. 1.

Presented by the East Troy Electric Railroad in conjunction with the East Troy Area Chamber of Commerce and Mukwonago Area Chamber of Commerce and Tourism Center, the beautifully lit four-car train will travel down the century-old interurban trolley line between Mukwonago and East Troy.

The original East Troy Christmas Parade train, started by the East Troy Jaycees and the railroad in 1972, was an historic reproduction of the Schuster's Christmas Parade in Milwaukee. The Schuster's Department store chain sponsored the parade, established in 1928, to

See SANTA CLAUS, Page 9



EMILY FRAME PHOTOGRAPHY Good Neighbors

Santa, Mrs. Claus and their entourage will make their annual journey to East Troy aboard the East Troy Electric Railroad's Santa Parade Train on Saturday, Dec. 1. The lighting of the Bob Barutha Community Christmas Tree will take place at 6:30 p.m. followed by photos with Santa (with no line!)

10

things we love about

East Troy (winter edition)

By Vanessa Lenz
EXECUTIVE DIRECTOR
EAST TROY CHAMBER

Winter in East Troy is a magical time of the year filled with delight and surprises around every street corner.

There are so many ways to celebrate the season. Embrace the winter landscape with your family and visit an area tree farm. Stay warm and toasty with a robust cup of coffee. Grab your skis or boards and head to the largest ski locale in southeastern Wisconsin. There's so much to see & do, you better start penciling them in your calendar...

1. Hitting the slopes at Alpine Valley Resort

Winter hasn't officially arrived in East Troy until you take a trip to Alpine Valley Resort.

Alpine features 20 slopes that range from beginner to expert mogul runs with 388 feet of vertical skiing. The hill also includes three Terrain Parks, which offer snowboarders and freestyle skiers a variety of rails, boxes and snow features.



PHOTO SUBMITTED Good Neighbors

Alpine Valley Resort, located right in East Troy, provides some of the most diverse skiing and snowboarding terrain in the Midwest.

See 10 THINGS, Page 2

Get your official East Troy Guide

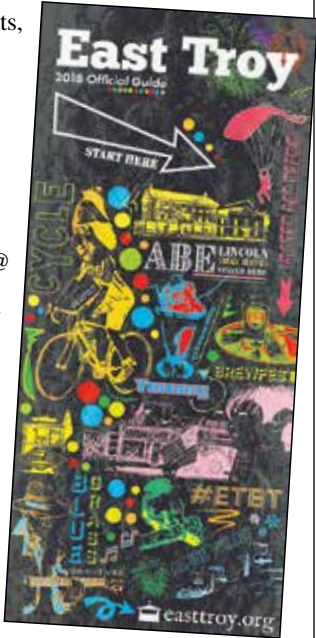
The East Troy Area Chamber of Commerce published East Troy's official Map & Brochure in 2018.

This popular visitor's guide is packed with everything you need to explore East Troy: including information on downtown, attractions, scenic highlights, restaurants, hotels and services.

Copies are currently on newsstands. To get a copy mailed to you, email vanessa@easttroy.org indicating your address.

An electronic version is available at easttroy.org.

2018 East Troy Map & Brochure



• 10 things (Continued from front page)

"We offer services that you would see out west but for half the price and locally. In specific to the ski hill aspect, we have three high speed quad chairlifts, five magic carpets and a snow carousel for kids," said Elizabeth Firestone, Ski and Snowboard Director. "We were voted number one for snow making and number one for family resort."

Firestone said the resort has recently had a facelift and they've had an influx of weddings, parties and corporate events.

If you are looking to get back on the slopes, Firestone suggests brushing up on your skills with one of Alpine's qualified and enthusiastic instructors. Alpine offers classes for beginners to well-seasoned skiers and riders.

"We host programs that get kids out on the ski hill, to get engaged in a sport that can last a lifetime safely," Firestone said.

To make the most of this year's Alpine season, check out their Weekday Specials (non-holidays), including Tremendous Tuesdays (\$31 a.m. session lift tickets), Men's Day Wednesday (\$34 a.m. session lift tickets for men) and Women's Day Thursday (\$34 a.m. session lift tickets for women).

"The best way to increase your value would be to purchase a season pass. A season pass is beneficial if you come to Alpine more than eight times. By that point you will have spent more on lift tickets then on the season pass," Firestone explained.

Students can get discounted rates by joining their school's ski club.

"East Troy Middle School, East Troy High School, East Troy elementary, East Troy Parks and Recreation and St. Peter's

School all have ski clubs that families can get involved in," according to Firestone.

Weekday rates are \$41 (all area) and \$29 (beginner) from 10 a.m. to 5:30 p.m. and 2 to 10 p.m. and \$56 (all area) and \$45 (beginner) for a full day. Weekend and Holiday rates are \$51 (all area) and \$37 (beginner) from 9 a.m. to 5:30 p.m. and 2 to 10 p.m. and \$66 (all area) and \$52 (beginner) for a full day.

"Alpine has been in business for 54 years, and we look forward to many more years. We love helping our community and only wish grow," said Firestone.

Alpine Valley is located at W2501 County Road D and can be reached at (262) 642-7374 and (800) 227-9395. For more information, visit alpinevalleyresort.com.

2. Taking wintry walks

East Troy is home to some of the most beautiful areas for hiking and they become even better when the seasons change. Here are our top winter walk spots:

Price Park Conservancy: Two miles of self-guided hiking trails run through the park, located at N6421 Hodunk Road in the Town of LaFayette, and include panoramic views of Sugar Creek, as well as other outstanding features of natural diversity.

Beulah Bluff Preserve: This Kettle Moraine Land Trust nature preserve, is located at N9026 Bakavi Way, East Troy. The

See 10 THINGS, Page 10

East Troy Area Chamber of Commerce Corporate Partners

Chairman Level (\$2,500)



WISCONSIN OVEN CORPORATION

Executive Level (\$1,500)

CITIZENS BANK
For Now. For the Future.



COBBLESTONE FARM



EAST TROY POINT SHELL



Leader Level (\$750)



JAMES R. TAYLOR & SONS INC.



Spotlight Real Estate LLC

• Anne Dunlop
414-258-3866

• Sherry Dixon
262-374-0322

• Dorene Salvati*
305-492-7512

• JoAnn McCormack
262-441-0170

• Debbie Swenarski
262-745-6602

*Joy and prosperity to all this
Holiday Season & New Year*



*Licensed in Wisconsin and Florida
331221

James R. Taylor And Sons
3 Generations of Quality Work!



◆ Roofing ◆ Siding
◆ Windows ◆ Carpentry
◆ Kitchen and Bath Remodeling

(262) 642-7970

www.jrtaylorandsons.com

FREE ESTIMATES

FULLY INSURED



Most Referred, Most Preferred

**Snow Plowing • Driveways • Patios
Sidewalks • Poured Walls • Garage Floors
Stamped Color Concrete • Pole Barns**

262-363-9200
262-642-5651

McPherson CONCRETE CONST. INC.



Quotes for
2019
Installation



Residential • Commercial • Fully Insured • Free Estimates
www.mcphersonconcreteinc.com

PAUL J. NYFFELER
CPA S.C.

Since 1987
TAX RETURN PREPARATION

- Complete Accounting Services
- Quickbooks Conversions & Training
- Bookkeeping & Payroll Services
- Personal, Business, & Trust Tax Preparation

The Bottom Line is Accuracy!

(262) 642-8700
paul@nyffelercpa.com

2481 Executive Drive • East Troy
Corner of Honey Creek Rd. & Executive Dr.

Gathering On the green

Wisconsin Oven returns as Chamber Golf Outing Champs

The East Troy Area Chamber of Commerce's 21st Annual Golf Outing was déjà vu all over again for Wisconsin Oven Corporation.

The team rolled into the tourney repeating history from 2014 & 2015 to take top honors at the outing held Sept. 28 at Evergreen County Club.

Winning team members, including captain Dave Strand, Mark Schahczinski, Steve Bertschinger and Greg Jennings went home with the coveted East Troy Chamber traveling golf outing 2018 championship trophy.

American Family Insurance-Kyle Resler Agency, including captain Kyle Resler, Tyler Kinnick, Hand Becker and Sam Mantych took second place.

"We are very grateful to the event participants, sponsors and volunteers who made this important fundraiser possible," said Vanessa Lenz, East Troy Area Chamber of Commerce Executive Director.

The funds raised by this event will benefit the Chamber's work on behalf of the East Troy area community, including community development, marketing, networking opportunities, special events, advocacy efforts and other programs to support local businesses and organizations of all sizes. As a 501 (c)(6) non-profit organization, the East Troy Chamber also assists visitors to our town and neighboring communities and promotes East Troy as an exceptional place to live work and play.

Kyle Resler of American Family Insurance-Kyle Resler Agency served as the golf outing chair.

Dennis Ackeret of the East Troy Electric Railroad & JoAnn McCormack of Spotlight Real Estate served as event volunteers.

HOLE SPONSORS

2894 on Main
Allan Integrated Control Systems
American Family Insurance -
Kyle Resler Agency

Amato Auto
Associated Bank
Bloom 360
Citizens Bank
Cobblestone Farm
East Troy Brewery
East Troy Hometown Pharmacy
East Troy Lions Club
East Troy Lioness Club
East Troy Shell (x2)
Evergreen Country Club
Fleury's Body Repair
Gateway Technical College
James R. Taylor & Sons
Koskinen Eye Clinic
Lakeside Painting
Legacy Funeral Services
Paul J. Nyffeler, CPA
Remedy Massage
Rhode's Towing - Repair - Sales
Tim Werwie- State Farm Insurance
Teronomy Builders
Wanezek Family Dentistry
Wisconsin Oven Corporation (x2)
Wisconsin Spinal Rehab Center

DRINK SPONSOR

Wisconsin Oven Corporation

LUNCH SPONSOR

Frank's Piggly Wiggly

BALL SPONSOR

American Family Insurance- Kyle Resler Agency

MASSAGE SPONSOR

Remedy Massage

PRIZE DONORS

5 Element Fusion
American Family Insurance - Kyle Resler
East Troy Brewery
East Troy Electric Railroad



PHOTO SUBMITTED Good Neighbors

Wisconsin Oven Corporation, including (from left) captain Dave Strand, Mark Schahczinski, Steve Bertschinger and Greg Jennings took top honors at the East Troy Area Chamber of Commerce's 21st annual golf outing Sept. 28 at Evergreen Country Club.

East Troy Times/East Troy News
East Troy Hometown Pharmacy
East Troy Shell
Evergreen Golf Club
The Hive Taproom
The Global Glass
Ivan's on the Square

Lovelight Flowers
Morningstar Golfers Club
Sammy's Place
Skydive Milwaukee
Snap Fitness
Snug Harbor Inn
Spotlight Real Estate

See more photos from this year's event at easttroy.org



SARAH MANKE Good Neighbors

Clockwise from above: American Family Insurance-Kyle Resler Agency, including (from left) Tyler Kinnick, captain Kyle Resler, Hand Becker and Sam Mantych took second place during the Chamber's 21st annual outing. Molly Moody (from left), Cindy Griffa, Jennifer Tuttle and Mindy Shaffer of RP Nutrients' team were among golfers to brave chilly September temperatures to hit the links for the East Troy Area Chamber of Commerce. McKenzie Maloney (left) and Gina Peter of Remedy Massage gave golfers chair massages while they waited their turn at hole 5. East Troy Area Chamber of Commerce president Ben Keating (right) and Jamie Rohrer, both of the East Troy Computer Club, enjoy the day at Evergreen Country Club in support of East Troy community development.



Drink mead, save bees

Hive Taproom owner becomes beekeeper

By Vanessa Lenz
EAST TROY CHAMBER
EXECUTIVE DIRECTOR

When Ayla and Tim Guild opened The Hive Taproom this summer on the west side of East Troy, both were making the transition from day job to entrepreneur.

The meadery, located at W2463 County Road ES, is just the second licensed mead-making business of its kind in Wisconsin.

The Guilds said the timing was right for the business with the popularity of craft beer in the area and the resurgence of interest in mead (produced by fermenting honey and adding other ingredients.)

For Ayla, who serves as the Hive Taproom's Creative Director, the new business provided an opportunity to use her expertise as an equine veterinarian to do something good for the bee population and environment.

"Tim and I are both half scientist / half artist and this project lets us be both," said Ayla.

Since the Hive Taproom uses only local, raw, unfiltered honey to make its mead, the business relies heavily on local bees.

"The thing about honey is that it's perfect when you get it straight from the bees themselves. You don't have to add anything to it or to process it in any way," said Ayla.

Ayla said she quickly made it a goal to establish her own hives in order to provide

more pollinators and harvest her own honey.

She began her training under Dan O'Leary of Honey Valley Beekeeping.

"I saw his honey at the café (2894 on Main) and called the number on the bottle," she said of the way they first met.

Ayla said O'Leary taught her everything she knows – how to choose a site for the hives, where to obtain bees and equipment, how to properly care for the bees, how to collect the honey, how to overwinter the hive and more.

Ayla said she was immediately attracted to the idea of learning the ancient craft along with a new outlook on the tremendous benefit in the Taproom's potential to give the Wisconsin honey industry a boost.

"I began to fall in love with these fascinating insects," said Ayla. "I was amazed by the similarities between bees and horses. Both require you to be present, calm and relaxed."

While most beginners start with 2-4 hives, Ayla began with 26 hives (with about 70,000 bees in each), officially making the switch to a full-time beekeeper.

With bees at the heart of her work, Ayla has spent the past 22 months reading, talking to other beekeepers, closely inspecting her hives and learning as much as she could.

"I tried to figure out what works and what doesn't work," she said. "The more I learned, the more I realized I didn't know."

She said knowing what a healthy colony looks like takes time and patience.

"I spend many hours with each hive to get a feel of what is going on in the colony," Ayla said.

Ayla has four different varieties of bees in five different locations.

She said since bees have a foraging range of about 2 miles, different apiary settings can make a big difference in honeybee health.

In addition to providing honey for The Hive's mead, Ayla said she wanted something with a more sustainable element.

"Bees provide a critical benefit to farmers throughout the world," she said.

Nearly one-third of the food we eat relies on honeybees for pollination, said Ayla.

As honeybee populations decline, it causes a serious threat to local agricultural crops with honeybee pollination alone adding more than \$15 billion in value each year, according to the U.S. Department of Agriculture.

Ayla said The Hive Taproom will continue to put a focus on partnering with local beekeepers to source honey and will sell local honey on a rotational basis.

The Hive Taproom will also offer a series of Becoming a Beekeeper courses on the first Sunday of the month to connect and equip beekeepers from the beginner to the hobby to the experienced level with the concepts, knowledge and best management practices needed for sustainable beekeeping.



SARAH MANKE Good Neighbors

For Ayla Guild, the Hive Taproom provides an opportunity to use her expertise as an equine veterinarian to do something good for the bee population and environment. Ayla and her husband Tim create meads ranging from dry to semi-sweet. Their naturally gluten-free beverages feature local everything: honey, hops and produce.

About the Hive

The Hive Taproom is Wisconsin's newest mead taproom producing small batch mead, honey kombucha and soda elixirs. Ranging from dry to semi-sweet, its naturally gluten-free beverages feature local everything: honey, hops and produce.

Stop in or visit the Taproom's website for a calendar of food truck, live music & art events.

For more information, visit thehivetaproom.com.

PROUD SUPPORTER OF EAST TROY!



RESLER & ASSOCIATES, LLC
3238 Main St.
East Troy, WI 53120
(Piggly Wiggly Shopping Center)

(262) 642-3283
www.reslerandassociates.com

**AMERICAN FAMILY
INSURANCE®**
Insure carefully, dream fearlessly.

313513



CGSmith

making your technology effortless™

Call (262) 220-7784 for a FREE estimate!



Websites



Hybrid Web
Applications



Warehouse
Systems



Ecommerce



Security
Cameras



Building
Intrusion



Card
Access



Fire Alarm
Systems

www.cgsmith.net | (262) 220-7784

331220

*Quality
Custom Framing*

**Prints - Needlecraft - Shadowbox
Heirlooms - Posters**

20% off Frames & Matting
Expires December 10, 2018

www.qcframer.com

Call Sue Budzien at (262) 492-7521

3224 Douglas Avenue, East Troy, WI 53120
(by appointment only)

331258

MEAD & HONEY KOMBUCHA



CRAFT BREW
HONEY WINE

COLD, DRY &
CARBONATED

NATURALLY
GLUTEN FREE

seasonal | small batch | rotating tap



LOCAL RAW HONEY

LOCAL HOPS

LOCAL ORGANIC PRODUCE

'TIS THE SEASON TO HERE!

W2463 Co Rd ES, East Troy, WI
thehivetaproom.com



331328

East Troy's First Fridays

EAST TROY SQUARE
5 to 8 p.m. on the First Friday of every month, May- November

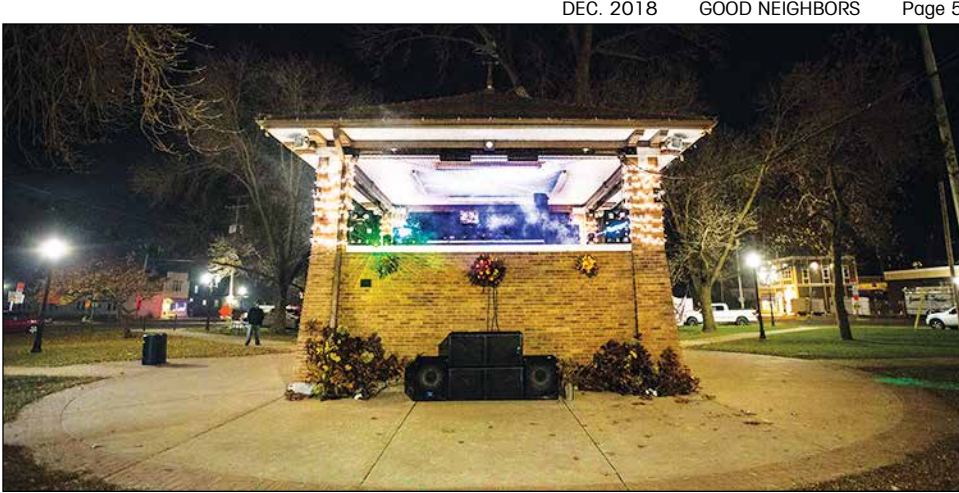
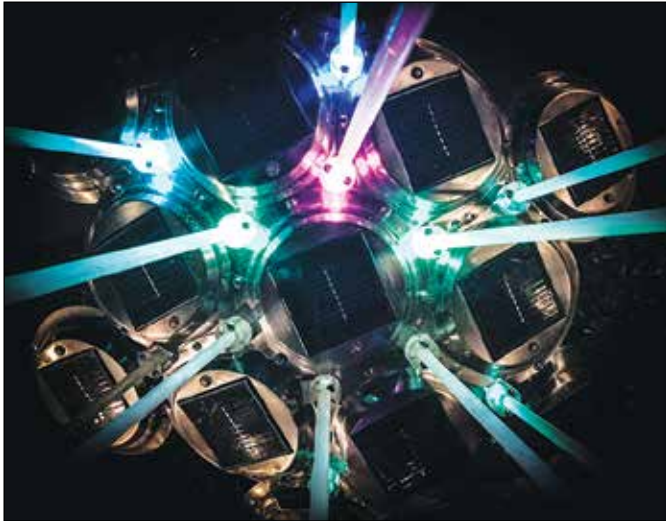
Each First Friday, May-November, featured a showcase event at East Troy Village Square Park with surrounding local

businesses collaborating to bring an afternoon and evening of fun.
The series, hosted by the East Troy Area Chamber of Commerce, will return in May through November next year. To support future programming, visit easttroy.org.
Thanks for a great season. See you in 2019!



Above: Vanessa Lenz, East Troy Area Chamber of Commerce Executive Director (left), and Sarah Manke, Marketing & Graphic Design Coordinator kick off the Halloween season during East Troy's First Fridays Oct. 5 Scare on the Square event. Right: Artist Mike Garber debuted one of several blinky light creations at East Troy Village Square Park during the East Troy Art Walk Nov. 2.

JAMIE ROHRER *Good Neighbors*



SARAH MANKE *Good Neighbors*

Left: Ghosts, goblins, princesses and ghouls fill East Troy Village Square Park during the East Troy Area Chamber of Commerce's October First Fridays event. Above: DJ JC Hanna performs live from the bandstand (decorated by Lovelight Flowers) at East Troy Village Square Park during the East Troy Art & Wine Walk Nov. 2, which concluded the 2018 First Fridays series & featured wines curated by The Global Glass and cheeses from Hill Valley Dairy. Below: Each First Friday event, like the Oct. 5 Halloween celebration, featured a showcase event, along with food trucks, farmers market vendors and live music at East Troy Village Square Park with surrounding businesses collaborating to bring an evening of fun. Bottom: Addison Halbesma (front) and Grace Williams paint the community easel during the East Troy Art & Wine Walk.





INTRODUCING OUR NEW SAVINGS CLUB JUST FOR KIDS!

Hey kids! Ca\$h the Dog makes it fun and easy to save. When you join our **Cash Savings Club**, you'll get a bunch of cool stuff, like a **Welcome Wag Bag** with a **Paw Coin Bank**. Plus, each time you deposit money into your account, you get a **paw stamp** to earn a neat **prize** — or you can choose to **donate** to a local animal shelter!





Follow us: [Citizens Bank - WI](#)

citizenbank.com
262-363-6500

Member FDIC | Equal Housing Lender

CITIZENS BANK

For Now. For the Future.

Amato Automotive Group Home of

WARRANTY FOREVER!



Amato Ford Now Has SERVICE AND PARTS OPEN SATURDAY!

"At Amato Ford, We're Driven to Make You Happy!"

JOHN AMATO FORD

1015 MAIN STREET, MUKWONAGO
www.amatoauto.com • (262) 363-3085





Monday-Friday 8-8;
Saturday 8-5

The building at 2905 Main St. will be the home of East Troy Brewery, which will be majority owned and operated by longtime East Troy residents Ted and Ann Zess, and is expected to open later this year, according to a news release from the WEDC.

“The State Bank of East Troy was the cornerstone of the community for over 100 years, and we are excited to help create another cornerstone in this same building to assist in the redevelopment of the jewel of East Troy, the Village Square,” said Ted and Ann Zess. “We could not be more thankful that the State of Wisconsin, and more specifically WEDC, is supporting this project to enhance downtown redevelopment in our community.”

The new business will be an integral part of East Troy’s historic Village Square, the centerpiece of downtown that regularly hosts festivals and band concerts. The building, located on the southwest corner of the square, is being restored closer to its original look of 1892 and will complement the rest of the historic buildings on the square.

“This project will not only bring a new business to downtown East Troy, which will create jobs and attract visitors, but it also will preserve a piece of the village’s history by redeveloping a building that is more than a century old,” said Lt. Governor Rebecca

Kleefisch, who announced the grant in East Troy during a presentation Oct. 2. “A vibrant downtown is essential to a community’s overall economic health and quality of life, which is why WEDC supports municipalities throughout the state as they invest in improving their business districts.”

One of the unique attractions of the brewery will be an automated brewing system that will enable customers to view an interactive control system to understand how the brewing process takes place, which will bring a modern twist to both a historical process and a historical building.

“This is a true catalyst for village business owners to improve the façades of their buildings,” said East Troy Village President Scott Seager. “The square has been the heart of our community. To be able to preserve and expand on the quality of its appearance is a true gift.”

“This is the type of project economic development people dream about: it’s rescuing an old building in a key location; it’s providing good jobs; it’s adding to the charm of the downtown; and it has a lot of local investors supporting the project,” added Derek D’Auria, executive director of the Walworth County Economic Development Alliance. “Ted and Ann Zess have a longstanding history of supporting the community in significant ways, so I’m glad this project was able to access funding and incentives needed to make it a reality.”

Once it opens, East Troy Brewery will employ up to 12 full-time workers and between 10 to 20 part-time staff members.

The renovation work and business startup will cost about \$2.5 million and is being funded by the WEDC grant, the Community Development Block Grant revolving loan fund from the Village of East Troy, bank financing from Park Bank and local investors.

WEDC’s Community Development Investment Grant Program supports community development and redevelopment efforts, primarily in downtown areas. The matching grants are awarded based on the ability of applicants to demonstrate the economic impact of the proposed project, including public and private partnership development, financial need and use of sustainable downtown development practices.

Since the program began in 2013, WEDC has awarded more than \$22 million in grants for projects expected to generate more than \$300 million in capital investment.



TIFFANY KELLS PHOTOGRAPHY Good Neighbors

East Troy Brewery received a Wisconsin Economic Development Corporation Community Development Investment Grant for the extensive buildout the former State Bank of East Troy building on the Village Square. Lt. Governor Rebecca Kleefisch (pictured center with majority owners and operators Ann and Ted Zess) awarded the grant Oct. 2, with about 80 East Troy Brewery friends, family, contractors and investors in attendance.



TIFFANY KELLS PHOTOGRAPHY Good Neighbors

The East Troy Brewery team includes (from left) head brewer Ryan Hammerel, majority owners and operators Ann and Ted Zess, assistant GM Amber Schultz and GM/Executive Chef Brent Fiedor. The Zesses expressed their gratitude to local investors/owners and community members for supporting the project.



TIFFANY KELLS PHOTOGRAPHY Good Neighbors

Before its official opening, East Troy Brewery will be hosting an exclusive preview at the brewery for its first 100 brew club members. Members will get their pick of available safety deposit boxes in the former bank building’s vault with special key.

Join the Brew Club

East Troy Brewery will be featuring two types of Brew Club Memberships.

Members will not only support their local brewery, but will also get delicious discounts, early access to hang out at East Troy Brewery events, and some East Troy Brewery gear.

Memberships are annual and run from Jan. 1 through Dec. 31.

Here’s how it works. All members receive a membership card with a unique membership number. When using benefits, just give your member number along with a photo ID.

For more information, visit etbrew.com.



2905 Main Street, East Troy, WI

MEET NEW FRIENDS, GATHER WITH FAMILY

HOUSE-BREWED CRAFT BEER

HANDCRAFTED FOOD

ETB Tasting Flight (Changes Daily)



LOCAL AND FRESH. For crafting both our food and beers, we hand-pick premium ingredients and source them as fresh and as local as we can.

SUPERB AND UNIQUE. We've worked hard to invent a tap list and menu unlike anything else in the area.

A COZY HANGOUT. Warm up and escape the winter next to our fireplace and lounge. We offer a laid-back space to unwind and share good times.

JOIN OUR BREW CLUB COMMUNITY - ONLY ACCEPTING 100 MEMBERS FOR 2019

VIP BREW CLUB

Benefits include 9 special beers bottled just for members, a safety deposit box in our vault, an ETB pint glass and growler, and specials on our Brew Club Wednesdays—plus much more.

REGULAR BREW CLUB

Benefits include ETB pint glass, ETB growler, and specials on our Brew Club Wednesdays—plus much more.

Go to etbrew.com/brew-club for more

Follow Us on Facebook at facebook.com/ETBrew

Find Our Website at etbrew.com

Email Us at info@etbrew.com



EAST TROY
COMMUNITY SCHOOL DISTRICT

Committed to the Growth & Success of Each Student, Each Year

The East Troy Community School District is a District of Choice, empowering students through Personalized Learning Environments, State and Nationally Recognized Academics, One-to-One Technology, and rigorous and relevant course work, that enhances critical thinking, creativity, collaboration, communication, and content.

Among the district’s offerings and recent successes. . .

• **Family & Community Connections:** The District offers a free program for children from infant to age 4 that is designed to promote play and social development, as well as offer safe and meaningful interactions. The ETCSD also offers several educational parent nights throughout the year that cover topics such as Parenting Strategies, Drug and Alcohol Awareness, Bullying, Internet Safety, and Mental, Emotional, and Social Health. District staff have developed over 100 community partnerships for two consecutive years that assist with supporting meaningful learning experiences.

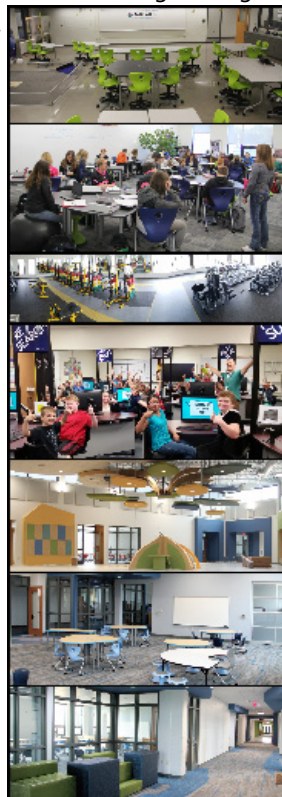
• **New/Renovated Spaces:** A successful referendum in April 2015 has addressed several urgent facility needs across the District and provided a great learning environment for our children for years to come. The projects include light renovation at Doubek Elementary, renovation at the Middle School, renovation and additions to the High School, and construction of Little Prairie Primary School.

• **World Recognized Fab Lab:** East Troy is among the very few Fab Labs in Wisconsin that are recognized worldwide as part of MIT’s Fab Foundation.

• **First in Nation:** Prairie View Elementary and the East Troy Middle School were the first certified SmartLabs™ in Wisconsin. Little Prairie Primary’s SmartLab™ is the first in the nation completely dedicated to primary-aged children. SmartLabs™ are an engaging program where students explore STEAM through project base learning and applied technology.

• **Little Prairie Primary School Opened Fall 2017:** Little Prairie Primary serves students in the district’s early childhood program through second grade. The building reflects ecological and architectural aspects of the East Troy community as well as provides flexible learning spaces within multi-grade academic wings.

Visit www.easttroy.k12.wi.us for more information.



A guide to holiday giving in East Troy

The Holiday Help of East Troy program will continue this year featuring a collaborative approach to assisting local families in need. "It is through the generous support of local businesses, churches, organizations and community members that this program is able to continue," said East Troy Family and Community Resource Center coordinator Marolyn Komperud, who leads the five-year-old initiative. Komperud said the program model makes it

easier than ever to provide families in need with gifts, winter clothing and a holiday meal during the holiday season. In 2017, Holiday Help of East Troy served 78 families with a combined 166 children. "This is truly a community venture and a way for East Troy to come together to help struggling families to have a blessed holiday season," Komperud said. Donations are due by Dec. 10 unless otherwise noted. Here are ways to give this year:

1. Toy drive

The East Troy Lions Club is collecting gifts for children birth to 16 years of age for its new toy drive. Donations can be dropped off at toy collection barrels at the following locations: Citizens Bank, Dollar General, First Citizens State Bank and Frank's Piggly Wiggly East Troy through Dec. 10.

2. Gift giving trees

Giving trees to purchase gifts for local children will be located at East Troy Bible Church, Good Shepherd Church, Realty Executives Integrity and St. Peter's Catholic Church and School. Wrapped donations are due no later than Sunday, Dec. 9.

3. Secret Santa

Associated Bank, 3292 Main St., is seeking East Troy community members/groups to serve as secret Santas by purchasing gifts for residents of East Troy Manor. The bank will be offering pictures with Santa on Saturday, Dec. 8 from 10 a.m. to noon. Wrapped donations are due no later than Friday, Dec. 21.

4. Winter clothing drive

The East Troy Lioness Club is collecting hats, scarves, gloves, mittens, socks and slipper socks for children (infant to 18 years old) at First Citizens State Bank, 2546 E. Main St. Donations should be taken to the bank by Friday, Dec. 7.

5. Gifts for children & teens

Citizens Bank East Brook Branch, 2541 E. Main St., Unit A, will be collecting socks, underwear and pajamas in infant through adult sizes through Dec. 10.

Wanezek Family Dentistry, 2564 Main St., will be collecting toys, pajamas, socks/underwear, hygiene items (soap, shampoo, conditioner, makeup, feminine hygiene products, etc.) as well as monetary donations through Dec. 10.

Martins Hardware- Rental & Pet, 3288 Main St., will be collecting hygiene products such as toothbrushes, toothpaste, shampoo/conditioner, children and infant bath products, etc. through Dec. 10.

6. Monetary donations

Monetary donations for the Holiday Help Program can be sent to the East Troy Family Community Resource Center, PO Box 962, East Troy, WI 53120.



Santa Parade TRAIN

December 1 EAST TROY

Santa Photos * Winter Activities * Live Music
Christmas Tree Lighting



Santa on the SQUARE

restaurant at 2511 Main St. in East Troy.
The restaurant opening is the next step in the success story of LD's BBQ as well as Davis, who has built a reputation for supplying southeastern Wisconsin with its fill of signature "Wisconsin barbecue" – a mix of a few regional styles in the United States.
"I tried to convey to my customers when I was building this that this is going to be their new home as much as mine," said Davis. "Somewhere I need to get a sign that says 'Welcome Home' because this is a BBQ home."
For Davis, who's worked tirelessly to build this BBQ brand since 2011, it's been a long time coming.
LD's BBQ moved to East Troy in 2013 offering roadside inspired BBQ out of the BP gas station with just one smoker and one employee and no inside dining area. The stop, inspired by the roadside stands and mobile trailers popular in states like South Carolina and Texas, quickly received top customer reviews and made best-of lists.
An expansion to allow dine-in followed in 2015, but Davis soon experienced growing pains and was searching for an independent brick and mortar location
"It's getting around," said Davis of LD's increased volume of business. "East Troy itself has been incredibly welcoming. We also have regulars from Chicago and as far as Indiana."

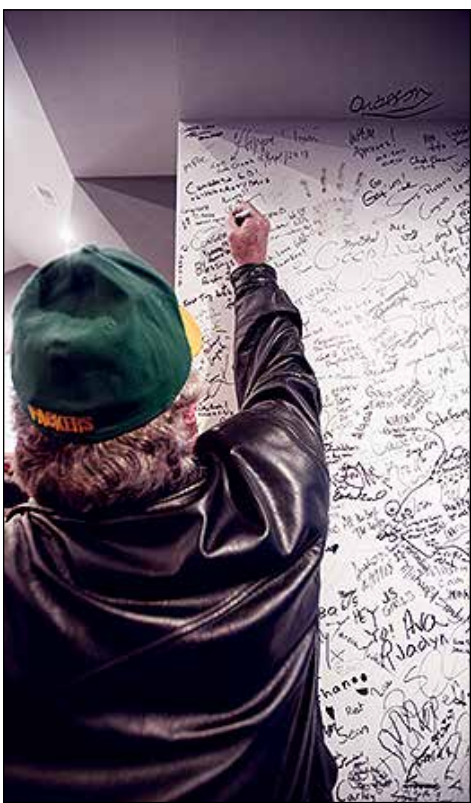
A major makeover

LD's new expansion has hit the refresh button on the corner of Main Street and Energy Drive – another step forward in the midst of other frenetic growth in East Troy.
Where once sat a generic Burger King, is now a fully remodeled, sharp looking new restaurant with an eye catching wrap-around porch and exterior painted traditional barn red.
"You can picture a couple of old fellows sitting out there on chairs and wittling and people laughing and enjoying themselves," said Davis. "BBQ is so communal that I want people to meet other people here and get to know one another."
Designed and built by Moden Structures, the reimagined space blends the perfect mix of modern with traditional, immediately emerging as a signature stop on East Troy's main drive.
The ambitious multi-part summer construction project was completed on Sept. 9. Moden Structures, led by Mighty and Marcia Moden, worked with Davis to give the space a top-to-bottom remake.
While the meat is still cooked on onsite in



LD's BBQ trailers, (giving off that beloved aroma of smoked meats roasting over hard wood) Davis said a priority was to make the kitchen area bigger to keep up with a greater demand for catering services.
Davis said he would have liked even more kitchen space, but wanted to make sure there was enough room for his guests to sit and move through the line.
"Already the lines have been consuming," said Davis. "We are trying to find out ways to move them through faster but at the same time this isn't fast food."
The completely renovated dining space more than doubled the size of LD's BBQ former location, which was 1,300 square feet.
"I wanted to make it a way of bringing people together," said Davis of the restaurant's new layout.
The dining area features long community tables with large windows wrapping around the front of the building, showcasing BBQ culture to passersby. The decor offers the quintessential barbecue experience – with longhorns mounted on the wall, license plate wall art, souvenirs from Davis' travels and family treasures like a sign from his grandfather's auction barn.

See LD'S BBQ, Page 11



SARAH MANKE Good Neighbors

Clockwise from above: Fans of LD's BBQ flocked to the restaurant's grand opening Nov. 4 to check out its new location at 2511 Main St. The signatures of LD's BBQ fans decorate the west entry wall. Owner Leon Davis gave guests samples special items for the occasion.





Happy Holidays

from everyone at

FIRST
CITIZENS

STATE BANK
EAST TROY OFFICE

2546 E. Main Street
P.O. Box 866 • East Troy
(262) 642-2530 • (800) 236-8766 • www.firstcitizensww.com

OPEN: Mon.-Thurs., 9 a.m.-5 p.m.
Fri. 9 a.m.-6 p.m.; Sat., 9 a.m.-noon
Drive-up open 8 a.m., Mon. through Sat.



Member
FDIC

Genuine Customer Service, Sound Ratings,
Stability you can rely on.

299418

Need a gift for your holiday gathering?

We've gotcha covered!

We have a great selection of gifts!

- Vintage Sodas to fit the likes of just about everyone!
- Gift cards! • Wine! Who doesn't like a bottle of wine?
- Beer and liquor • Lottery tickets! • Greeting cards!

Open every day including holidays from 4:15 a.m. until 11 p.m.

We got **super** friendly staff to greet you!

We got a coupon to save you money!

Your in store coupon!

\$5 off

Your in store gift item purchase of \$25 or more

**East Troy Shell**
2526 E Main Street, East Troy

Discount is allocated across items. Gift Cards, lottery, alcohol, cigarettes, convenience store items, taxes and prior purchases do not qualify toward the minimum purchase. Coupon expires 2/28/2019.



331224

Winter calendar

DECEMBER

1 ST. JAMES CHRISTMAS BAZAAR
St. James United Methodist Church, 2945 Main St., will host its Christmas Bazaar from 9 a.m. to 2 p.m. on Saturday, Dec. 1.
The event will feature a Christmas Bake Sale (homemade cookies, cakes, pies, bread and candy), hot chocolate, cider, coffee, handcrafted greeting cards, quilted holiday table runners, used and new books, Christmas decorations and gifts. For more information, call (262) 642-7642.

1 PET PICTURES WITH SANTA
Martin’s Hardware-Rental & Pet, 3288 Main St., will host its ninth annual Pet Pictures with Santa from 11 a.m. to 4 p.m. on Saturday, Dec. 1. Attendees are invited to bring in their pets (on leash or crate) and get a picture with Santa, a bag full of goodies and special store coupons for participants. A \$10 donation to Lakeland Animal Shelter is encouraged. There will be multiple in-store specials for the entire weekend. For more information, call (262) 642-3344.

1 MOUNTAIN TOP BEER FEST
Alpine Valley Resort, in collaboration with the East Troy Family and Community Resource Center, will host Mountain Top Beer Fest from 2 to 5 p.m. on Saturday, Dec. 1 at Alpine, W2501 County Road D. The event will benefit the Holiday Help of East Troy Program, which supports local families in need during the holiday season. Enjoy a variety of beers from an array of breweries, hors d’oeuvres, raffles and take home a tasting glass.
Tickets are \$37 per person in advance, \$45 at the door or \$25 with a regularly priced lift ticket. Tickets may be purchased at alpinevalleyresort.com, at the East Troy Family and Community Resource Center, 3066 Main Street, Suite 108, or by calling (262) 642-3916.

1 LIONESS HOLIDAY SALE
The East Troy Lioness will be selling walking tacos and hot dogs from 5 to 8 p.m. on Saturday, Dec. 1 in the East Troy Lion’s Lodge, 2077 Division St. during East Troy’s Santa on the Square festivities.

2 FFA CHILI PACKER PARTY
East Troy FFA will host its annual Chili Dinner and Packer Party from 11 a.m. to 4 p.m. on Sunday, Dec. 2 at Ivan’s Backstage, 2093 Division St. The event will feature a silent auction, meat raffles, barrel of booze raffle and more. All proceeds support the East Troy FFA.

6 ADULTS COOKIE DECORATING WORKSHOP
The East Troy Family and Community Resource Center, 3066 Main St., Suite 108, will host an Adults Only Cookie Decorating Workshop with Nana’s Yummy Cookies at 5:30 p.m. on Thursday, Dec. 6.
Participants will learn tricks and tips for decorating the perfect sugar cookie over the course of 2 to 2 1/2 hours. The cost is \$25 per person and each participant will take home 6-9 cookies. Participants must register and pay by Sunday, Dec. 2. Payments can be mailed to the Family Resource Center at P.O. Box 963, East Troy, WI 53120. For more information, contact Marolyn Komperud at (262) 642-4900 or easttroyfamily@gmail.com.

8 CHRISTMAS COOKIE SALE
Troy Center United Methodist Church is holding a bake sale from 9 a.m. to 4 p.m. on Saturday, Dec. 8 at First Citizens State Bank, 2546 Main St., East Troy.

8 PANCAKES WITH SANTA
The Salvation Army– Army Lake Camp will host Pancakes with Santa from 8 to 11:30 a.m. on Saturday, Dec. 8 at the camp, N8725 Army Lake Road in East Troy.
Menu items include pancakes, sausage and more.
Children will have an opportunity to meet Santa, decorate their own Christmas cookie and get a gift.
The cost is \$9 at the door and \$8 online for ages 13 and older and \$7 at the door

and \$6 online for children ages 4-12. Admission is free for children younger than 3. Tickets are available at <http://salar.my/> Santa2018. For more information, call (262) 642-6400.

8 HOME PARTY AND CRAFT FAIR
The East Troy Family and Community Resource Center will host its annual Home Party and Craft Fair from 9 a.m. to 2 p.m. on Saturday, Dec. 8, in the Bret Miller Gymnasium at East Troy High School, 3128 Graydon Ave.
The event will feature more than 80 different direct sale vendors and concessions with both breakfast and lunch items. Bake sale items will also be offered to benefit the Family Resource Center.
For more information, contact Marolyn Komperud at (262) 642-4900 or easttroyfamily@gmail.com.

14 BAKE SALE AT FIRST CITIZENS
First Citizens State Bank will hold its 10th Annual Bake Sale on Friday, Dec. 14 from 9 a.m. to 6 p.m. Items offered for sale will include a wide assortment of cookies, candy, breads and bars. All proceeds will be donated to the East Troy Food Pantry. The bank is located at 2546 Main Street, East Troy.

15 JINGLE BELL ROCK
Ivan’s Backstage, 2093 Division St., will host the 5th Annual Jingle Bell Rock on Saturday, Dec. 15. Doors open at 6 p.m. Featured musicians include Spare Change Band and more. Tickets are \$6 at the door. For more information, call (262) 642-7100.

16 EAST TROY LIONS CLUB PANCAKE BREAKFAST
East Troy Lions Club holds a pancake breakfast from 8-11 a.m. every third Sunday of the month at the Lions Lodge and Community Center, 2077 Division St. Tickets are \$7 for adults, \$6 for seniors, \$5 for children 6-12 and free for children 5 and younger.

27-30 CHARITABLE SISTERHOOD CHRISTMAS SPECTACULAR
Off the Square Players will present “Charitable Sisterhood Christmas Spectacular,” a comedy play, on Dec. 27, 28, 29, 30 at Ivan’s Backstage, 2093 Division St. Visit ivansonthesquare.com for information about menus or events and tickets.

JANUARY

19 BRUNCH ON BROADWAY
East Troy High School Choir will present Brunch on Broadway on Saturday, Jan. 19 at St. James United Methodist Church, 2945 Main St., East Troy.
Show times are at 10 a.m. and 11:30 a.m. Tickets are available in advance for \$12 for adults and \$7 for students. Tickets at the door are \$15 for adults and \$10 for students.
Farm to table meal provided by Hometown Sausage Kitchen, Yuppie Hill Poultry and Simple Cafe. Purchase tickets in advance from East Troy High School Choir Students or the ETHS office, 3128 Graydon Ave

20 EAST TROY LIONS CLUB PANCAKE BREAKFAST
East Troy Lions Club holds a pancake breakfast from 8-11 a.m. every third

Sunday of the month at the Lions Lodge and Community Center, 2077 Division St. Tickets are \$7 for adults, \$6 for seniors, \$5 for children 6-12 and free for children 5 and younger.

FEBRUARY

2 TRIANGLE SPORTSMEN’S 46TH ANNUAL ICE FISHING JAMBOREE
Lindey’s on Beulah, W1340 Beach Road, will host the Triangle Sportsmen’s Club 46th Ice Fishing Jamboree at 7 a.m. on Saturday, Feb. 2. Enjoy food and drink, raffles, contests, games, meat raffles, cash drawing, silent auction and more. For more information, call (262) 642-2600.

16 DADDY DAUGHTER DANCE
GOAL of East Troy is hosting a Daddy Daughter Dance for girls of all ages and their dads from 6 to 9 p.m. on Saturday, Feb. 16 at the East Troy High School Bret Miller Gym, 3128 Graydon Ave., East Troy. This dance is a fundraiser and profits will be applied toward athletic expenses for youth with financial limitations in the East Troy and Mukwonago communities. For more information, call (262) 749-8687.

ONGOING

LIVE MUSIC AT EAST TROY SCHOOLS
The East Troy Community Schools Music Department will host several holiday music concerts in December:

- **Wednesday, Dec. 5:** Seventh and eighth grade bands will perform at 7 p.m. in the East Troy Middle School gym, 3143 Graydon Ave.
- **Thursday, Dec. 13:** Fifth grade band and general music class will perform at 6:30 p.m. in the Prairie View School Gym, 2131 Townline Road.
- **Sunday, Dec. 16:** Middle school and East Troy High School choirs will perform at 3 p.m. in the high school Brett Miller Gym, 3128 Graydon Ave.
- **Wednesday, Dec. 19:** High school bands will perform at 7 p.m. in the high school Gym 3.

TRIVIA NIGHT
The Hive Taproom, W2463 County Road ES, will offer Trivia Night from 7 to 9 p.m. on Thursdays. The Hive Taproom is Wisconsin’s newest mead taproom producing small batch mead, honey kombucha and soda elixirs. Ranging from dry to semi-sweet, its naturally gluten-free beverages feature local everything: honey, hops and produce. For more information, call (262) 355-4415 or thehivetaproom.com.

YOGA ON THE SQUARE
Connect mind, body, and spirit with certified yoga instructors Julie Scurek and Elizabeth Weinkauff at 9:30 a.m. on Sundays with 60-minute beginner’s yoga classes at 2890 Main St., 2nd floor, above InkLink Books. Classes are \$12. Registration is not required, but attending yogis will need to bring their own mats and water.

BINGO AT EAST TROY HOUSE
East Troy House, 2093 Division St., will offer bingo on Thursday nights, featuring \$5 special martinis from 5-9 p.m. and Bingo from 6:30-9 p.m. Bingo cards are \$2 each or three for \$5. Winners get cash pots, prizes and drink tickets. For more information, call (262) 642-7100.



PHOTO SUBMITTED *Good Neighbors*
Autumn Kniseley, Brandon McKinnell and their dogs Uno & Macy get their annual photo taken with Santa at Martin’s Hardware-Rental & Pet, 3288 Main St. The ninth annual Pet Pictures with Santa will return to the store from 11 a.m. to 4 p.m. on Saturday, Dec. 1.

• Santa Claus

(Continued from front page)

No line for photos with Santa
Professional photos with Santa and Mrs. Claus will be available following the tree lighting after 6:30 p.m.
The cost is \$8 with proceeds to benefit the East Troy Food Pantry.
Avoid the wait in line this year. Here’s how it works: You check in at the photo area. Our volunteers get your name, enter the information into our system and then give you a number with an approximate wait time.
Linger outside, shop inside the holiday marketplace or check out the offerings at one of the establishments on the square until your number appears on one of numerous status boards, indicating it’s your turn for photos.

kick off the Christmas shopping season. It disappeared in 1955 with the demise of the Milwaukee Electric Lines interurban and streetcar system.

SANTA ON THE SQUARE
In anticipation of Santa’s arrival, festivities will begin at East Troy Village Square Park at 5:30 p.m., including a tree lighting, winter activities, Holiday Marketplace, photos with Santa and more.

At East Troy Village Square Park
• Winter activities, including cookie decorating, s’mores station and DIY Photo Station
• Christmas carol sing-along led by East Troy High School Choir members.
• Professional photos of children with Santa and Mrs. Claus will be available following the tree lighting at about 6:40 p.m. at a cost of \$8 each, with the proceeds to benefit the East Troy Food Pantry. Photos sponsored by 2894

on Main and all participants will get a digital copy of their photo.
• Cub Scouts Pack 92 will sell chili, chili dogs and baked goods.

Inside Ivan’s Backstage
• The East Troy Holiday Marketplace will feature vendors offering a variety of holiday gift items.
• Kids Crafts
• Live music

Lions Lodge
• The East Troy Lioness Club will offer walking tacos, hot dogs and hot cocoa in the warmth of the Lions Lodge beginning at 5 p.m.

East Troy Area Historical Society
• The East Troy Area Historical Society will offer refreshments and tours from 5-8 p.m.

For more information, visit easttroy.org.

See the Santa Parade Train
Spectators can catch a glimpse of Santa along County Road ES. The train will stop briefly at the following crossings:

- 5:30 p.m., train departs at The Elegant Farmer
- 5:45 p.m., Army Lake Road – Army Lake Camp
- 6 p.m., St. Peter’s Road
- 6:15 p.m., Byrnes Street
- 6:25 p.m., Division Street
- 6:30 p.m., Santa arrives at East Troy Village Square Park via East Troy Fire Department truck to light the Bob Barutha Memorial Christmas Tree

preserve overlooks the northwest shoreline of Lake Beulah and is open to the public for passive recreation and environmental education.

Army Lake Public Access: Take a leisurely stroll to the public access point on the west side of the lake – a half-mile driveway connects the property to St. Peter’s Road in the Town of East Troy.

The 15.7-acre property at W1698 St. Peter’s Road features a 78-acre lake and 989 feet of shoreline frontage on Army Lake.

3. Grabbing the perfect cup

East Troy’s café 2894 On Main, located on the northwest corner of the East Troy Village Square, was designed to be an easily accessible community hub, featuring Tesla charging stations, community chalk message boards and community tables that welcome meet ups for local groups like the East Troy Computer Club. The beautifully renovated historic site from 1856, features a farm-to-fork menu and uses locally roasted beans with local, organic milk. For more information, visit 2894onMain.com.

4. Spending time on the Square

Relive your childhood and create your own Frosty the Snowman at East Troy Village Square Park, 2881 Main St., East Troy. The park includes green space and a bandstand promoting the nostalgia of the rural community. It’s also a great space for people watching.

Between the people buzzing in and out of the surrounding businesses, restaurants

and bars and cars making their way around the heart of East Troy, there’s rarely a dull moment.

5. Finding great sledding spots

Sledding is a popular winter pastime for young and old alike.

Mitchell Park, located directly north of the Rossmiller Sports Complex along Highway 20, is the largest sledding hill in East Troy, offering plenty of fun to delight sledding fans.

Two additional East Troy sledding hills are located at 1824 Thomas Drive in the Pulliam Nature Area and 1825 Thomas Drive in the West Kettle Nature Area.

6. Going Christmas Tree shopping

Going to the tree farm is a great family experience, as you search for the perfect tree, sip on hot chocolate, and take holiday pictures.

Evergreen Acres, located at N9171 Nelson Road in East Troy, lets you choose and cut the perfect Christmas fir.

“Our trees are planted in sod and the fields are mowed to make your walk to find your tree easier,” said owners Ann and Bob Feucht. “We offer help in the parking lot for shaking, baling and loading your tree, as well as help in our heated barn for choosing your special freshly made wreaths and other fine greenery.”

The Feuchts offer complimentary cocoa and cider to sip as you browse its selection of

fresh wreaths, garland and a few center pieces – all made fresh at the farm.

The family operated farm has been in business since 1975. The farm opens the day after Thanksgiving and is open every day until Christmas from 9 a.m. to 4:30 p.m.

For more information, visit evergreenacresllc.com or call (262) 495-4502.

7. Getting Extreme at Timber-lee

Camp Timber-lee, N8705 Scout Road, East Troy, which features 600 acres of rolling land and lakefront, currently offers nine winterXtreme camps. Get outdoors in the winter time and have a blast on the slopes at Timber-lee.

Winter recreation time includes the tube hill, tube run, toboggan run, broomball and the game room. For details visit timber-lee.com.

8. Learning about local history

The East Troy Area Historical Society will showcase local history during East Troy’s Santa on the Square event from 6 to 8 p.m. on Saturday, Dec. 1.

The event will also feature refreshments and tours. The current exhibit will remain open in 2019 at the Kubicki Museum and Heritage Center, 2106 Church St., on the village square.

The museum is open to the public free of charge Wednesdays from 9 a.m. to noon and Saturdays from 10 a.m. to 2 p.m. or by appointment by calling (262) 642-2642. Donations are gratefully accepted. For more information, visit etahs.org.

9. Hitting the ice

Embrace the chilly season to the fullest with ice fishing or skating on one of these local lakes:

Lake Beulah: At 812 acres, the largest lake in East Troy is a favorite for boating and fishing. It has a maximum depth of 58 feet. Fish include Panfish, Largemouth Bass and Northern Pike. The public access site is located on Wilmer’s Landing in the Town of East Troy.

Potter’s Lake: A 155-acre lake located in the Town of East Troy, has a maximum depth of 26 feet. Visitors have access to the lake from a public boat landing with access off County Road L. Fish include Panfish, Large-mouth Bass and Northern Pike.

Riding the rails with Santa

10. The East Troy Electric Railroad’s Christmas Train merrily rides the rails on weekends, beginning Nov. 24 through Dec. 16. These fun, family-friendly rides take passengers from the East Troy Depot, 2002 Church St., to Santa’s Workshop at the Elegant Farmer and back.

The rides are just under two hours per round-trip and they include Christmas carols on the trains and hot chocolate and cookies at the Elegant Farmer, where kids can visit with Santa and have their photos taken. The historic railroad cars are always heated and restrooms are available at the East Troy depot.

Trains will depart at 9 a.m., 10:30 a.m., noon, 1:30 p.m. and 3 p.m. on the following Saturdays and Sundays: Nov. 24 & 25, Dec. 1, 2, 8, 9, 15 & 16.

Tickets can be purchased online at easttroyrr.org. Adults are \$18.50, children (ages 3-14) are \$16, and toddlers are \$8. Advance reservations are required.



Your Local Connection for all your HOME BUYING AND SELLING Needs!

Sarah Alexander, Realtor
(262)745-7093
sarahalexandersells.com
2887 Main St., East Troy, WI
Your local connection.



313511

thirty-one
independent director

EARN UP TO 100%
PROFIT ON
FUNDRAISERS

25% profit guaranteed.
Tax exemption available.
No minimum order.



Trisha Ide
Independent Director
Thirty-One Gifts
trishaide@yahoo.com
262.203.0014
www.mythirtyone.com/trishaide

I have over 5 years of experience with Thirty-One and have been a leader within the company for more than 4 years. I have 14 years of general sales experience in addition to 3 years of fundraising experience which includes being previously employed by Market Day School Fundraising.

I offer customized options to fit your organization or cause. You’ll earn between 25% - 100% of the profits for your organization or you can also choose to earn free products. Each fundraiser is tailored to fit the needs of your organization or cause.

323190

KOSKINEN EYE CLINIC, LLC

WE BELIEVE LIFE IS ALL ABOUT YOUR VISION

A MEMBER OF VISION SOURCE

Comprehensive Eye Care
Contact Lenses

Jerry Koskinen, O.D.
Sandra Huenink, O.D.
Doctors of Optometry
(262) 642-9719

3278 W. Main St., Ste. B, Village Marketplace
East Troy, WI

307386

To those we serve, thank you for your trust.

Legacy
Funeral Services

Dana Rygiewicz,
owner/director

Pre-arrangement and
cremation services
also available.

642-5057

2974 Main St., East Troy WI
legacyfuneralservices@gmail.com
www.legacyfuneralservices.com

151280



Located at 3223 North St.
East Troy, WI 53120

Pet Friendly

heritageeasttroy@oakbrookcorp.com

East Troy’s
Most Active
Luxury Senior
Independent
Living.

Call Mary Ann Glowinski at
642-4800 for an appointment
or more information.

If you need eyewear right & fast,
we are Wisconsin’s LARGEST
independent eyeglass store.



- The largest selection of higher fashion & higher quality frames.
- We make all lenses here as quickly as you need them.
- 10 minutes east of East Troy, NE corner of Hwy. 36 & Main St., Waterford.
- Most insurance plans accepted.

“A little out of the way - quite a bit out of the ordinary”

Fluegge
OPTICAL

THE RESPECTED NAME IN QUALITY SINCE 1918
Corner of Hwy. 36 & Main St., Waterford, WI

(262) 534-6090

www.flueggeoptical.com
HOURS: Mon.-Fri. 9-6, Sat. 9-1



279296



25 Years of Bluegrass

Top left: Thousands gather from near and far for the 25th annual East Troy Bluegrass Festival at East Troy Village Square Park Sept. 8 & 9. Bottom left: The East Troy Bluegrass Festival celebrated the landmark year with a weekend lineup that included two of the industry’s biggest names, including 13-year-old Bluegrass sensation Carson Peters & Iron Mountain (pictured) and Volume Five, which has been blazing a red-hot trail on the bluegrass scene. Staying true to the festival’s roots, local, emerging and popular regional bands pepper each day’s lineup.

Check out more photos from the event at easttroy.org.

Photos by JAMIE ROHRER & ERIC KRAMER *Good Neighbors*



•LD’s (Continued from page 8)

Then there’s LD’s BBQ’s big case of trophies on the east wall.

LD’s BBQ has won many local awards, including Best BBQ in Wisconsin and 2016-18 Elkhorn Rib Fest Championships. LD’s has also made No. 6 on Milwaukee’s A list on multiple occasions and was recently noted in Food & Wine Magazine’s “Best BBQ Wisconsin” list. As the accolades pile up, so does the traffic to LD’s, which means more traffic for other retailers in the area.

100 years in every bite

Davis developed a passion for cooking the flavors of “traditional” barbecue while working as a traveling nurse in the southern part of the country. He developed his recipes and methods as a barbecue fan, expanding his knowledge by sampling authentic recipes and modeling his work after famous pit masters.

Davis said what sets his barbecue apart is that it’s smoked using all oak hardwood,

as promoted in his tagline “100 years in every bite.”

Davis said he isn’t making changes to the popular menu, which offers dine-in options, carryout and catering options.

“I’ve developed my menu based on the people that come here,” Davis said.

LD’s customers can have their pick of pulled pork, sliced brisket, pulled chicken or smoked sausages, along with a choice of Davis’s spicy or mild signature sauces.

Patrons can choose from sandwich selections like the McFarland (described as half pulled chicken, half pulled pork, all love) and the East Troy-born Wiley, featuring sausage covered in brisket and pork.

The menu also includes freshly baked bread, whole chicken, ribs and side items like coleslaw, potato salad, macaroni and cheese and specialties like brisket chili, meatloaf (on Wednesdays) and nachos.

LD’s BBQ is open Wednesday through Sunday from 11 a.m.-8 p.m. For more information, visit www.ldsbbq.com or call (414) 610-7675.

Join Us for a Step Back in Time
**Ivan’s on the Square,
 Ivan’s Backstage &
 Historic East Troy House.**



Ivan’s on the Square offers a casual eclectic atmosphere with great sandwiches, salads & specialty entrées. 262-642-7107. Tues-Sat, 11 a.m.-9 p.m.

Historic East Troy House (est. 1836) serves great food and drinks in a traditional Wisconsin tavern atmosphere. Try our famous Beer Cheeseburger. Fish Fry every Friday from 11 a.m. - 9 p.m. 262-642-7100 Opens 11 a.m. Tuesday - Sunday.

Ivan’s Backstage is a unique entertainment & party event space. Seats up to 100. Great for anniversary parties, bridal showers & birthday parties. Call 262-642-7107

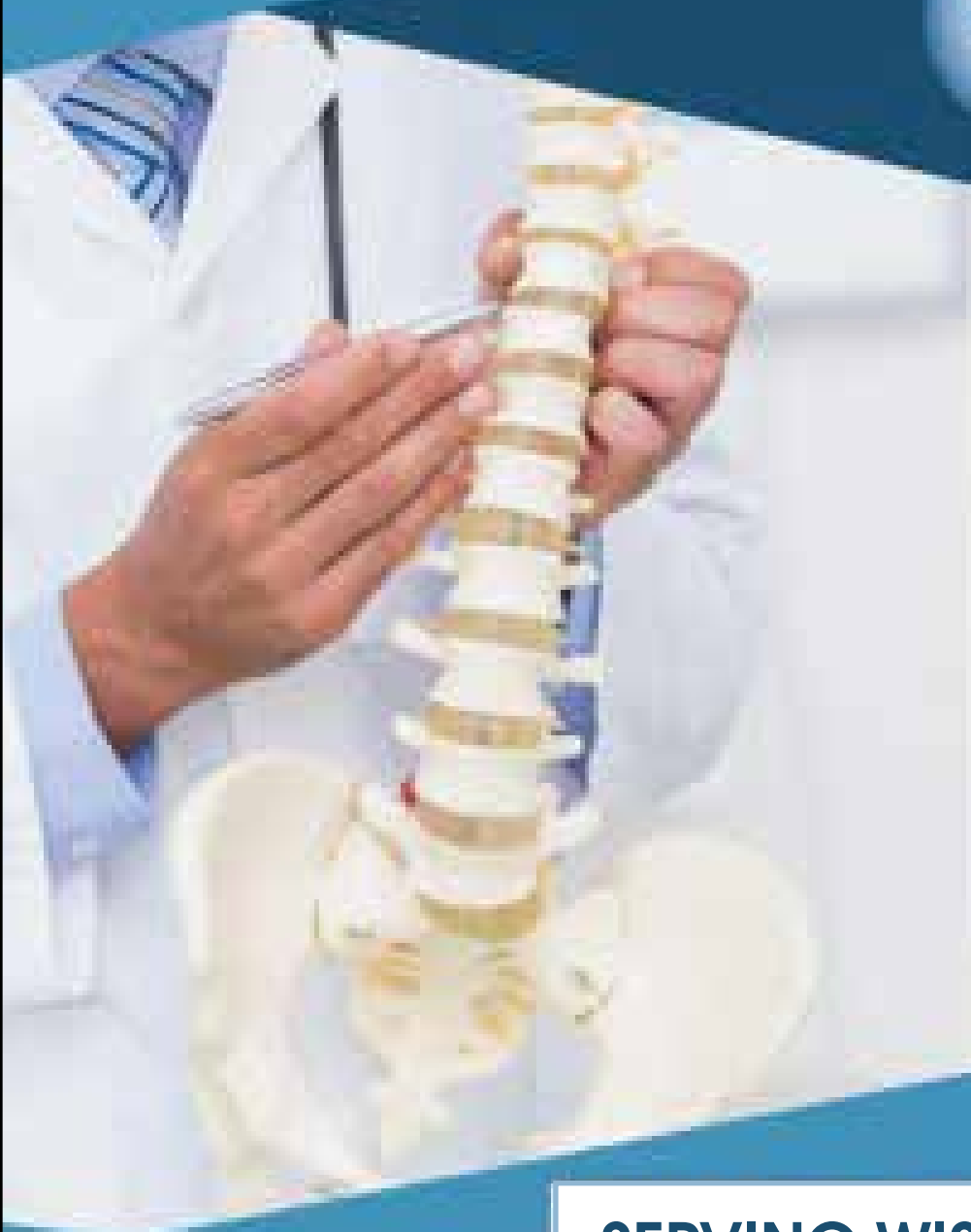


www.ivansonthesquare.com





WISCONSIN SPINAL REHABILITATION CENTER



SERVING WISCONSIN FOR OVER 25 YEARS!
Taking You from Pain to Wellness with
Natural Options for Healthy Living!

SERVICES OFFERED:

Chiropractic: Gentle, safe and effective Chiropractic care for the entire family.

Spinal Decompression: Benefit from the DRX9000 'True' Spinal Decompression for sciatica, herniated discs, degenerated discs, stenosis, arthritis, arm and leg tingling and pain.

Natural Neuropathy Treatment: Red Light Therapy and Nutritional treatments for Chronic Neuropathy in place of dangerous drugs with terrible side effects.

Contour Light Therapy: Lose an inch or two on your first visit with our newest and greatest whole body red light therapy weight loss program. Lose Inches - Gain Health.

Functional Nutrition: Identify specific nutrient deficiencies utilizing our blood analysis to determine your specific supplements needed to help live optimally.

HELPING THOSE SUFFERING FROM:

- Neck Pain
- Low Back Pain
- Sciatica
- Headaches
- Stenosis
- Arthritis
- Arm Pain/Numbness
- Leg Pain/Numbness
- Shoulder Pain
- Hand Tingling
- Weight Management
- Neuropathy
- Nutritional Deficiencies

Brookfield
21180 W. Capitol Drive
262.695.1870

www.SpinalRevival.com
www.JohnFriedrichs.com

East Troy
324 W. Main Street
262.642.4100